

# CROSS ALAMEDA TRAIL

## MAIN STREET TO CONSTITUTION WAY

### CITY OF ALAMEDA, ALAMEDA COUNTY, CALIFORNIA

**BASIS OF BEARINGS**

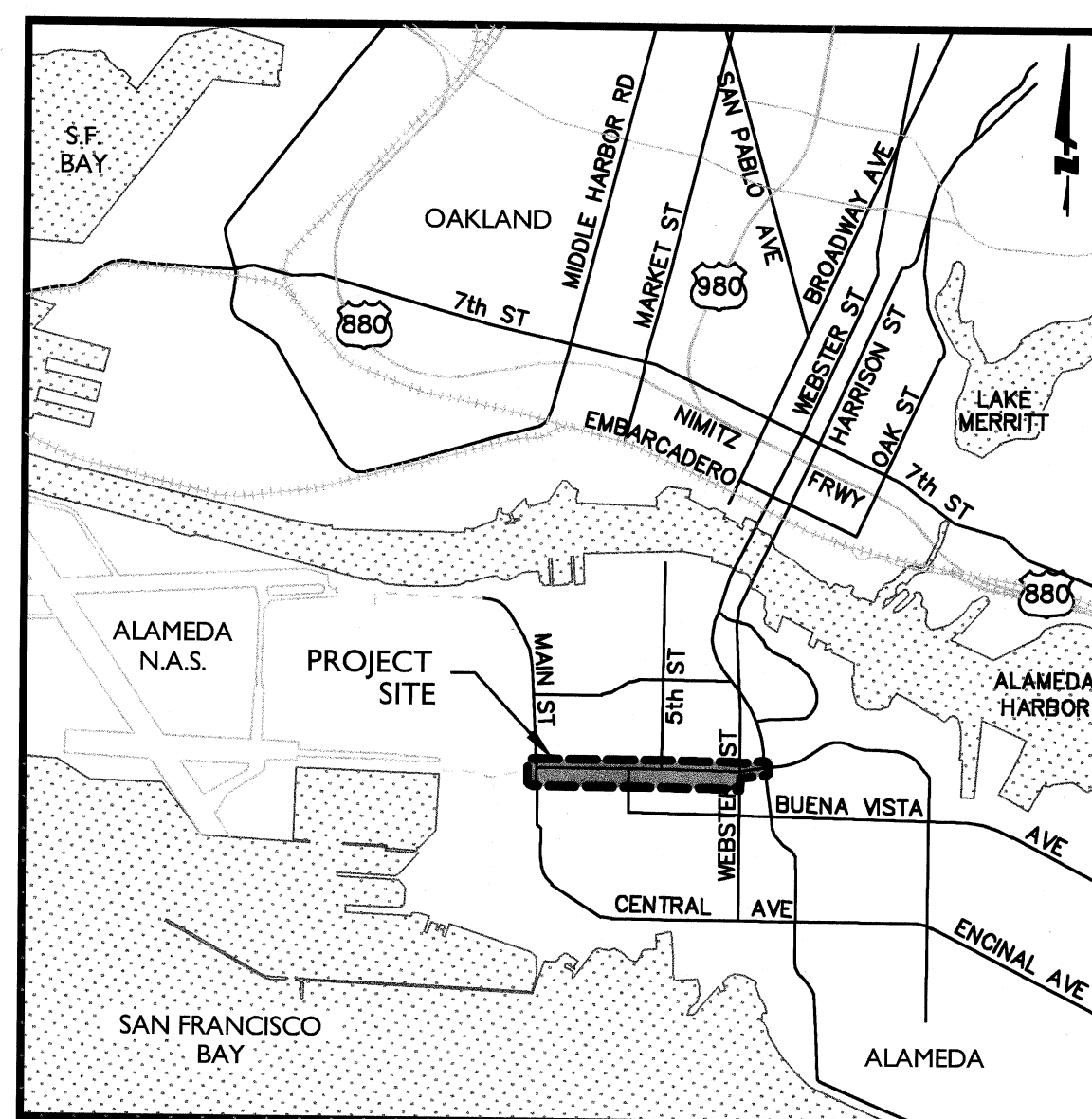
THE BEARING S87°25'47"E BETWEEN STATION 4 AND STATION 5 OF THE SEGREGATION LINE AS INDICATED ON THE RECORD AND BOUNDARY DELINEATION MAP SHOWN BELOW.

**BENCHMARK**

USC&GS DISK "MAIN-ATL" LOCATED AT THE INTERSECTION OF MAIN STREET AND ATLANTIC AVENUE. ELEVATION = 3.25'.

**DATUM**

CITY OF ALAMEDA.



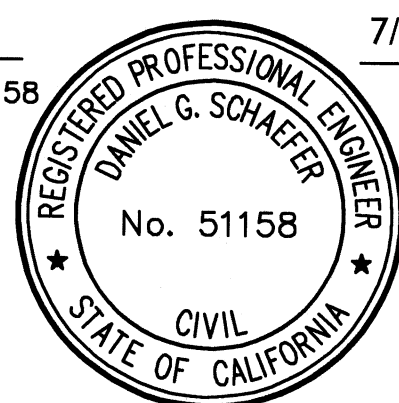
**LOCATION MAP**  
NTS

SHEET NUMBER	DESCRIPTION	SCALE
C0.00	PROJECT COVER SHEET	--
C0.01 to C0.04	CIVIL NOTES, LEGENDS AND ABBREVIATIONS	--
C0.05	LINE AND CURVE TABLES	--
C1.01 to C1.15	EXISTING CONDITIONS AND DEMOLITION PLAN	1" : 20'
C2.01	TYPICAL SECTIONS	--
C2.02	CROSS SECTIONS	--
C2.03	MAIN TO 3RD STREET SECTIONS	--
C2.04	3RD TO POGGI STREET SECTIONS	--
C2.05 to C2.07	POGGI TO MAIN STREET SECTIONS	--
C3.01 to C3.15	HORIZONTAL CONTROL AND STRIPING PLAN	1" : 20'
C4.01 to C4.15	GRADING AND UTILITY PLAN	1" : 20'
C5.01 to C5.03	EROSION CONTROL PLAN	1" : 50'
C6.01 to C6.11	TRAFFIC SIGNAL PLAN	1" : 20'
C7.01 to C7.06	CIVIL DETAILS	--
C8.01 to C8.04	SOIL REMEDIATION PLAN	1" : 40'
C9.01 to C9.02	STORMWATER MANAGEMENT PLAN	1" : 40'
L-1 to L-5	PLANTING / DETAIL REFERENCE PLAN	1" : 20'
L-6 to L-7	WEBSTER PLANTING PLAN	1" : 20'
L-8	MAIN ST. TO WEBSTER ST.	1" : 10'
L-9 to L-10	LANDSCAPE DETAILS	--
IR-1	WEBSTER IRRIGATION PLAN	1" : 10'
IR-2	WEBSTER IRRIGATION LEGEND AND NOTES	--
IR-3 to IR-5	WEBSTER IRRIGATION DETAILS	--
E0.01	SYMBOLS LIST, NOTES, SCHEDULES AND DRAWING INDEX	--
E1.01 to E1.09	SITE ELECTRICAL PLAN	1" : 20'
E2.01	ELECTRICAL DETAILS	--

**ENGINEER'S STATEMENT**

THESE IMPROVEMENT PLANS HAVE BEEN PREPARED BY ME OR UNDER MY DIRECTION IN ACCORDANCE WITH STANDARD ENGINEERING PRACTICE.

DANIEL G. SCHAEFER, P.E. RCE #51158  
PRINCIPAL/VICE PRESIDENT  
BKF ENGINEERS

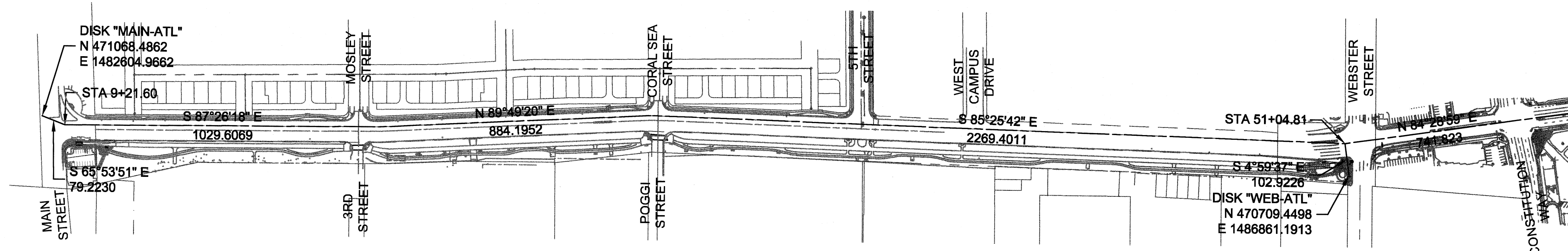


7/20/2018  
DATE

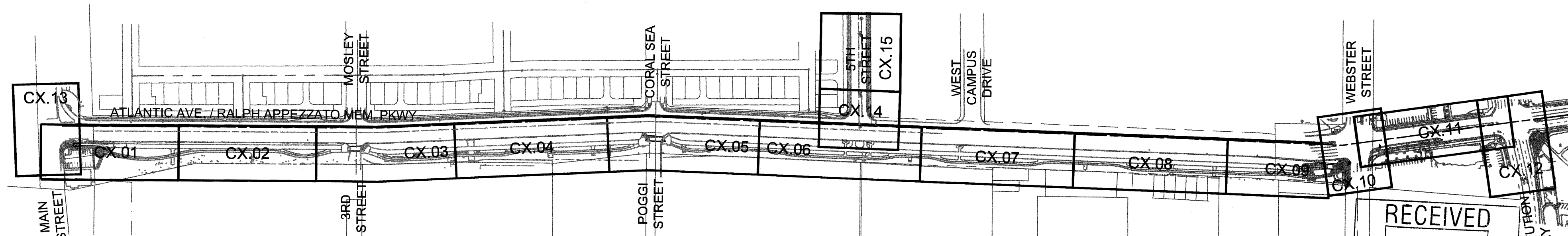
**CITY ENGINEER'S APPROVAL**

SCOTT WIKSTROM, P.E. RCE #56266  
CITY ENGINEER  
CITY OF ALAMEDA

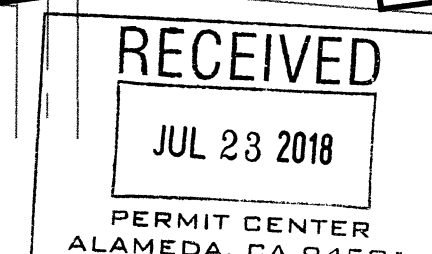
7/23/2018  
DATE



**CONTROL POINTS**  
NTS

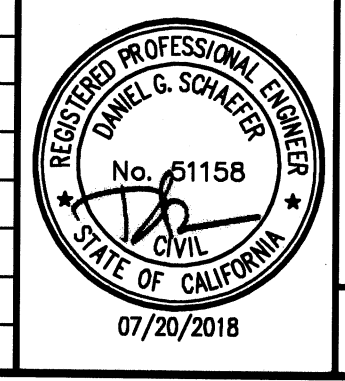


**KEY MAP**  
NTS



DRAWING NAME: K:\2014\145190\_Alameda\_Cross\_Alameda\_Trail\ENG\SHEETS\00\_A.TNT.dwg  
PLOT DATE: 07-20-18 PLOTTED BY: sobr

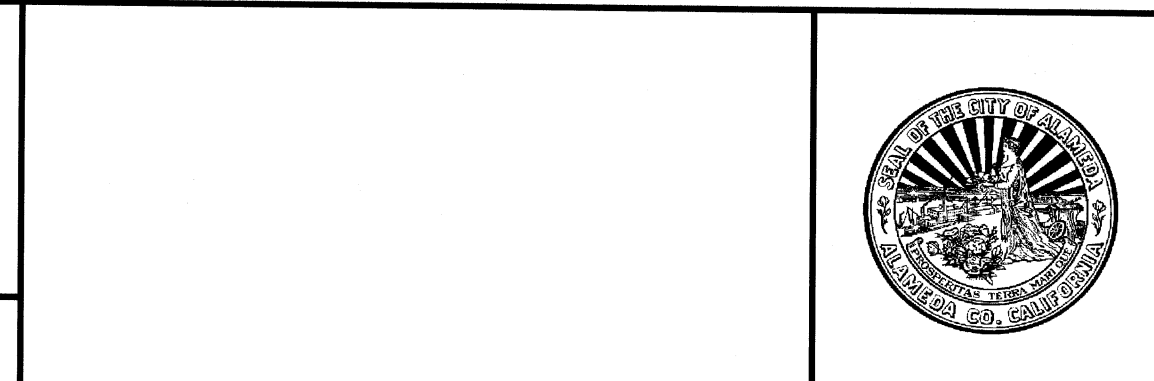
No.	Date	Revisions
	07/18/2018	CONSTRUCTION DOCUMENTS



**BKF** ENGINEERS / SURVEYORS / PLANNERS

1646 N. CALIFORNIA BLVD  
SUITE 400  
WALNUT CREEK, CA 94596  
PHONE 925-940-2200  
FAX 925-940-2299

Date 07/18/18 Scale NO SCALE Job No. 20145190  
Design CG Drawn CC/SC Approved DS/ES



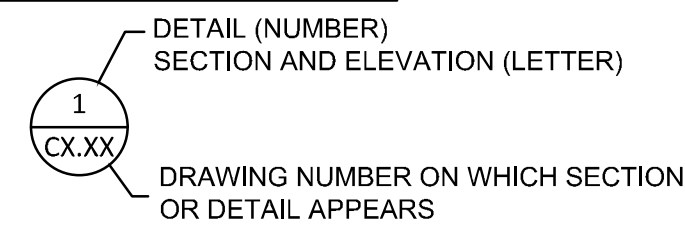
**CROSS ALAMEDA TRAIL**  
**MAIN STREET TO CONSTITUTION WAY**  
**TITLE SHEET**

CITY OF ALAMEDA      ALAMEDA COUNTY      CALIFORNIA

Sheet Number:  
**C0.00**



**CROSS REFERENCING**



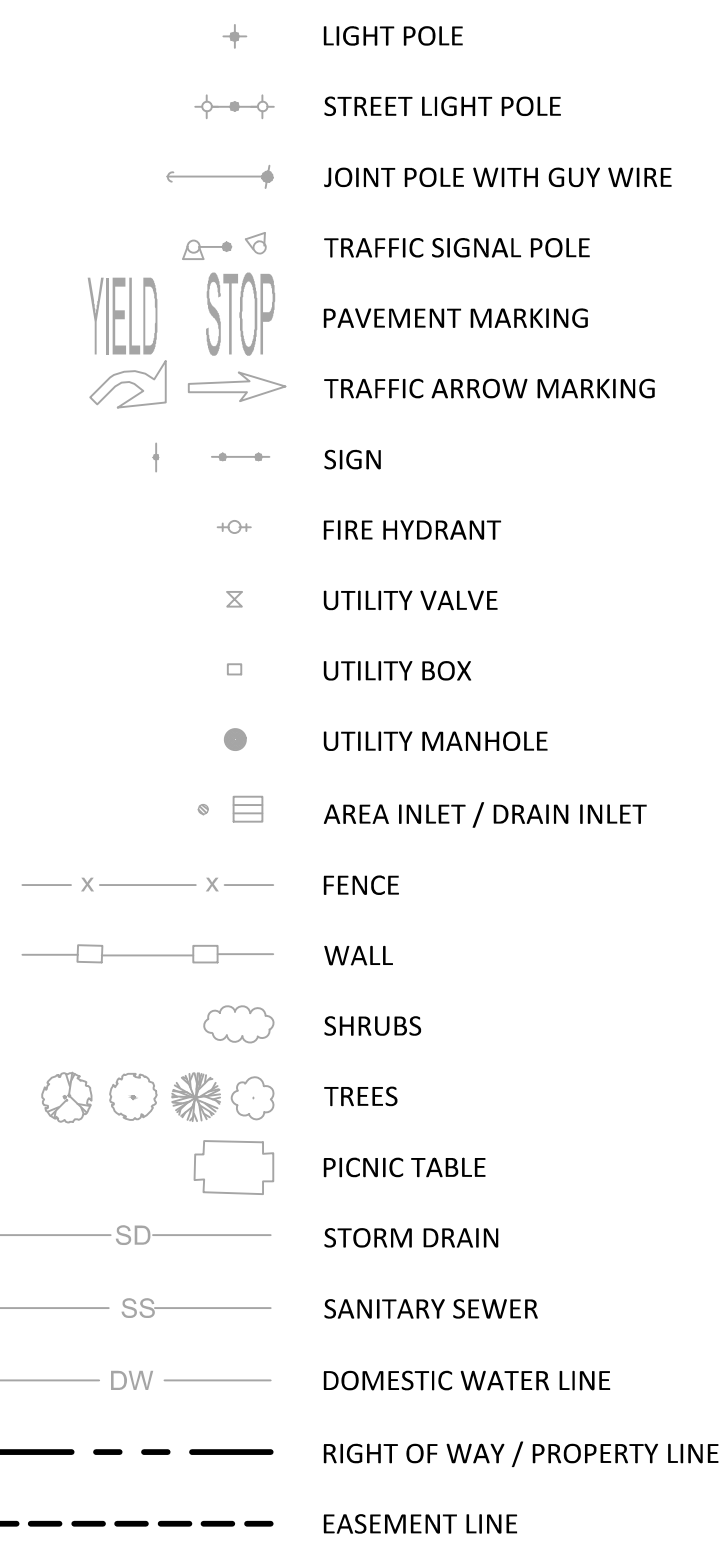
**GENERAL ABBREVIATIONS**

AB	AGGREGATE BASE
AC	ASPHALT CONCRETE
ACFC	ALAMEDA COUNTY FLOOD CONTROL
ADJ	ADJACENT
BC	BOTTOM OF CURB
BCC	BEGIN COMPOUND CURVE
BGW	BOTTOM OF GRADE AT WALL
BW	BACK OF WALK
C/L	CENTERLINE
CLF	CHAIN LINK FENCE
CL	CLASS
CMU	CONCRETE MASONRY UNIT
CO	CLEAN OUT
CONC	CONCRETE
DIP	DUCTILE IRON PIPE
DI	DRAIN INLET
DMA	DRAINAGE MANAGEMENT AREA
DW	DOMESTIC WATER
DT	DETAIL
E	ELECTRICAL
EP	EDGE OF PAVING
EX	EXISTING
FG	FINISH GROUND
FL	FLOWLINE
FO	FIBER OPTIC
FS	FINISH SURFACE
GB	GRADE BREAK
GRT	GRATE
HDPE	HIGH DENSITY POLYETHYLENE
HORZ	HORIZONTAL
LF	LINEAR FEET
LI	LINE
LT	LEFT
MAX	MAXIMUM
MIN	MINIMUM
MPH	MILES PER HOUR
NTS	NOT TO SCALE
INV	INVERT
PA	PLANTING AREA
PCC	PORTLAND CEMENT CONCRETE
PERF	PERFORATED PIPE
PPB	PEDESTRIAN PUSH BUTTON
PR	PROPOSED
PSE	PUBLIC SERVICE EASEMENT
PVC	POLYVINYL CHLORIDE
PVMT	PAVEMENT
RCP	REINFORCED CONCRETE PIPE
RIM	RIM ELEVATION
RT	RIGHT
S	SLOPE
SD	STORM DRAIN
SDAD	STORM DRAIN AREA DRAIN
SDCB	STORM DRAIN CATCH BASIN
SDCO	STORM DRAIN CLEAN OUT
SDDI	STORM DRAIN DRAIN INLET
SDLI	STORM DRAIN LINE
SF	SQUARE FEET
SHT	SHEET
SS	SANITARY SEWER
STA	STATION
STD	STANDARD
TC	TOP OF CURB
TGW	TOP OF GRADE AT WALL
TS	TOP OF SWALE
TW	TOP OF WALL
TYP	TYPICAL
VERT	VERTICAL

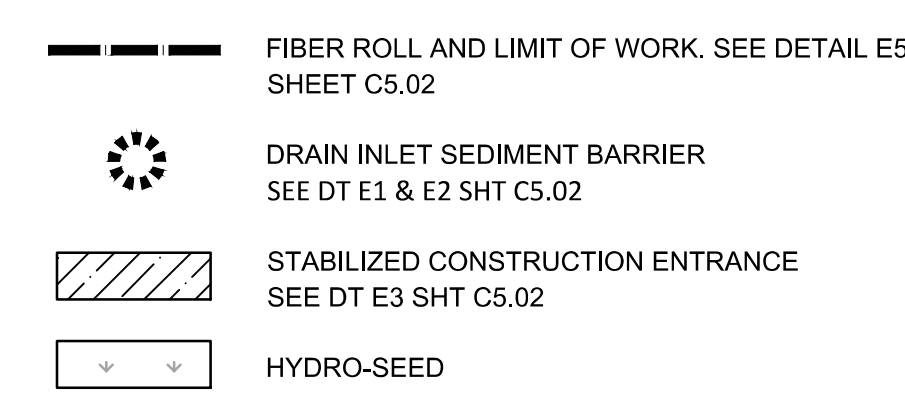
**PROJECT NOTES**

- EXISTING UTILITY MAIN LINES AND LATERALS ARE BASED ON RECORD INFORMATION. CONTRACTOR TO VERIFY ALL UTILITIES IN THE PROJECT AREA PRIOR TO CONSTRUCTION.
- OFFSET DIMENSIONS ARE FROM CENTERLINE OF RALPH APPEZZATO MEMORIAL PARKWAY. THE CENTERLINE OF RALPH APPEZZATO MEMORIAL PARKWAY SHALL BE REFERRED TO AS THE STATION LINE. CONFORM ELEVATIONS SHOWN ARE INTERPOLATED BASED UPON AVAILABLE SURVEY INFORMATION. CONTRACTOR TO MATCH EXISTING PAVEMENT ELEVATIONS AT CONFORMS AND VERIFY POSITIVE SLOPE TO DRAIN.
- FINISHED CONFORM GRADES SHALL BE 3:1 (H:V) MAXIMUM UNLESS INDICATED OTHERWISE ON PLANS OR IN SPECIFICATIONS.
- ALL CONSTRUCTION SHALL BE IN ACCORDANCE WITH THE "GEOTECHNICAL MEMORANDUM" PREPARED BY PARIKH DATED MARCH 30, 2018, THE "SOIL REMEDIATION WORKPLAN FOR THE CROSS ALAMEDA TRAIL" PREPARED BY TETRATECH DATED APRIL 14, 2017, AND THE "PRE-DEMOLITION HAZARDOUS MATERIALS SURVEY REPORT" PREPARED BY TETRA TECH DATED NOVEMBER 10, 2015.

**EXISTING CONDITIONS LEGEND**



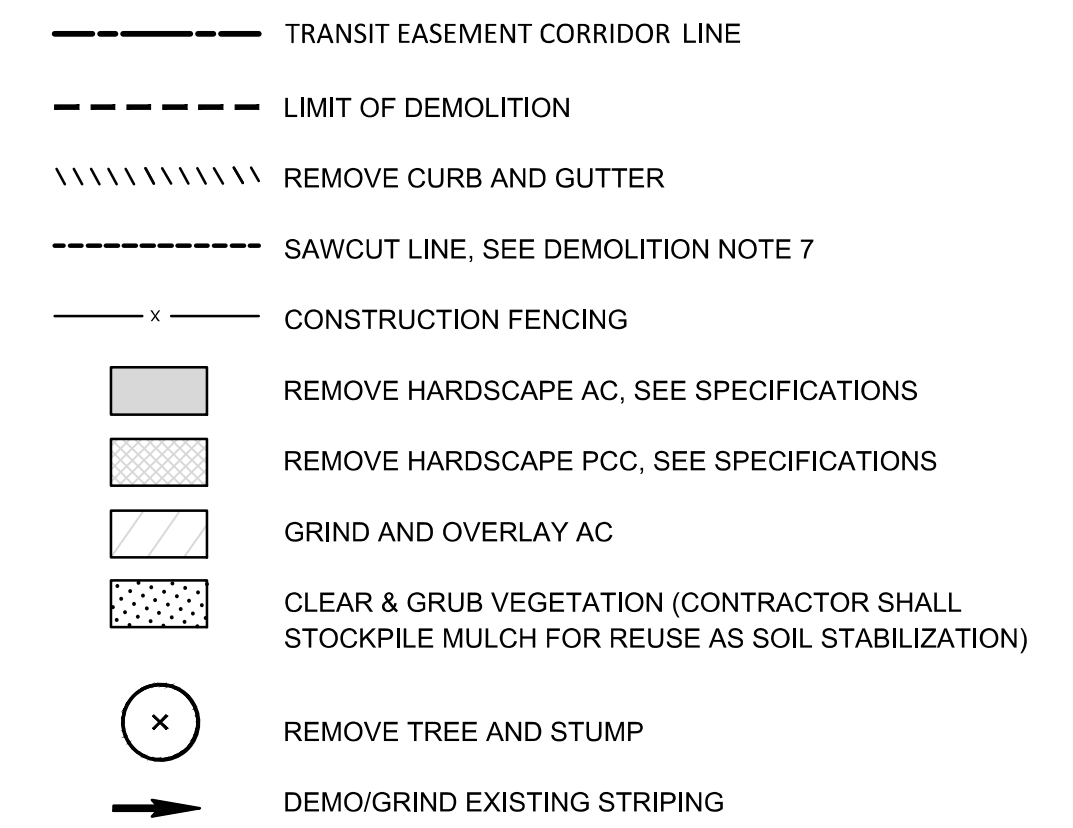
**EROSION CONTROL LEGEND**



**EROSION CONTROL NOTES**

- SHEET C5.01 AND C5.02 SHALL BE USED FOR EROSION AND SEDIMENTATION CONTROL ASSOCIATED WITH THE STORM WATER POLLUTION PREVENTION PLAN. EXISTING IMPROVEMENTS OUTSIDE LIMIT OF WORK REFLECT AVAILABLE RECORD AND AS-BUILT INFORMATION AND MAY NOT REFLECT ACTUAL FIELD CONDITIONS. CONTRACTOR SHALL IMPLEMENT THE NECESSARY EROSION CONTROL MEASURES AS NEEDED FOR ACTUAL SITE CONDITIONS.
- FOR ADDITIONAL EROSION AND SEDIMENT CONTROL NOTES SEE SHT C5.03.
- CONSTRUCTION ENTRANCES SHOWN IS A RECOMMENDATION ONLY. CONTRACTOR SHALL INSTALL CONSTRUCTION ENTRANCES AS NEEDED FOR CONSTRUCTION ACTIVITIES.
- PROPOSED IMPROVEMENTS ARE SHOWN WITHIN THE LIMIT OF WORK. CONTRACTOR SHALL INSTALL AND MODIFY, AS NECESSARY, EROSION CONTROL MEASURES UNTIL PROJECT CLOSE OUT.
- CONTRACTOR SHALL HIRE A QUALIFIED SWPPP DEVELOPER TO DEVELOP A SWPPP AND FILE A NOTICE OF INTENT TO DISCHARGE WITH THE SWRCB. CONTRACTOR SHALL ALSO PROVIDE A QUALIFIED SWPPP PRACTITIONER TO IMPLEMENT ALL SWPPP NEEDS ON SITE FOR THE DURATION OF CONSTRUCTION.

**DEMOLITION LEGEND**



**DEMOLITION KEYNOTES**

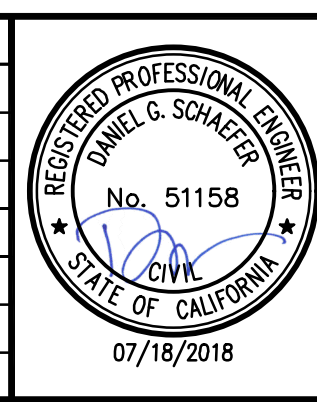
- |          |                 |
|----------|-----------------|
| <b>P</b> | PROTECT         |
| <b>D</b> | DEMOLISH        |
| <b>R</b> | RELOCATE        |
| <b>S</b> | SALVAGE         |
| <b>A</b> | ADJUST TO GRADE |
- CONTRACTOR TO DEMO PLANTS IN THIS AREA, RELOCATE IRRIGATION METER, AND FIELD FIT EXISTING IRRIGATION SYSTEM TO IRRIGATE PLANTS IN THIS AREA. CONTRACTOR TO SUBMIT PLN OF IRRIGATION REVISIONS FOR APPROVAL BY LANDSCAPE ARCHITECT PRIOR TO INSTALLATION
  - CONTRACTOR TO REMOVE AND CAP PRIVATE IRRIGATION LOCATED ON CITY PROPERTY. CONTRACTOR TO PROTECT EXISTING IRRIGATION TO REMAIN WITHIN PRIVATE PROPERTY. CONTRACTOR TO SUBMIT PLAN OF IRRIGATION REVISIONS FOR APPROVAL BY LANDSCAPE ARCHITECT PRIOR TO INSTALLATION.
  - CONTRACTOR SHALL VERIFY THAT ELECTRICAL BOXES BELONG TO AMP AND SHALL HAND EXCAVATE. NO MACHINE OR POWER EQUIPMENT DIGGING ALLOWED WITHIN 5' PERIMETER OF THE ELECTRICAL EQUIPMENT.

**DEMOLITION NOTES**

- SEE SPECIFICATIONS FOR CLEARING & GRUBBING AND DEMOLITION PROCEDURES.
- CONTRACTOR SHALL REMOVE ALL STRUCTURES WITHIN LIMIT OF DEMOLITION UNLESS OTHERWISE NOTED TO BE PROTECTED ON THE PLANS.
- UTILITY STRUCTURES TO BE PROTECTED SHALL BE RELOCATED AND/OR ADJUSTED TO FINISHED GRADE, SEE PLAN AND PROFILE SHEETS.
- ALL TREES WITHIN THE LIMIT OF DEMOLITION SHALL BE PROTECTED UNLESS OTHERWISE NOTED FOR REMOVAL.
- CONCRETE REMOVAL SHALL BE PERPENDICULAR TO PATH OF TRAVEL AND TO NEAREST SCORE MARK FROM LIMIT SHOWN ON PLAN.
- ALL IRRIGATION COMPONENTS IN CONFLICT WITHIN THE TRAIL CORRIDOR SHALL BE REMOVED. IRRIGATION PIPES OUTSIDE OF THE TRAIL SHALL BE CAPPED AND PROTECTED IN PLACE UNLESS OTHERWISE NOTED. REFER TO IRRIGATION PLANS FOR FURTHER DETAILS.
- WHEN THE LIMIT OF DEMOLITION IS ALONG HARDSCAPE SURFACES (PCC & AC PAVEMENT, VERTICAL CURB, CURB AND GUTTER, ETC.) THE LIMIT OF DEMOLITION SHALL BE CONSIDERED THE SAWCUT LINE.
- DIMENSIONS ON DEMOLITION PLAN ARE APPROXIMATE AND MAY VARY PER FIELD CONDITIONS.
- WORK SHOWN WITHIN BID ALTERNATE LIMIT OF DEMOLITION SHALL NOT BE INCLUDED IN THE BASE BID. ADDITIONALLY, SAWCUTTING THAT IS ADJACENT TO THE PROJECT LIMIT OF DEMOLITION SHALL BE DEDUCTED FROM THE BID ALTERNATE.
  - DEMOLITION QUANTITIES FOR BID ALTERNATE 2 INCLUDE THE FOLLOWING: REMOVAL OF TENNIS COURT PAVING, FENCE, POSTS AND ASSOCIATED FOOTINGS.
- CONTRACTOR SHALL REVIEW THE OPERATIONS OF THE EXISTING IRRIGATION SYSTEM WITH THE RESPONSIBLE PARTIES PRIOR TO THE START OF DEMOLITION.
- CONTRACTOR SHALL GATHER EXISTING SITE MULCH AND TEMPORARILY STOCKPILE FOR USE TO PERMANENTLY STABILIZE SITE. AREAS THAT ARE LEFT UNCOVERED SHALL BE HYDROSEEDDED.
- CONTRACTOR SHALL SALVAGE BOULDERS. CONTRACTOR SHALL PLACE BOULDERS BETWEEN MAIN STREET AND WEBSTER STREET AT THE DIRECTION OF THE LANDSCAPE ARCHITECT.
- CONTRACTOR TO COORDINATE DISPOSAL OF NEWS STAND ON ATLANTIC AVENUE WITH CITY OF ALAMEDA.

DRAWING NAME: \\BKF-WC\vol4\2014\145190\_Alameda\_Cross\_Alameda\_Trail\ENG\SHEETS\00\_A\TNT.dwg  
PLOT DATE: 07-18-18 PLOTTED BY: chr

No.	Date	Revisions
	07/18/2018	CONSTRUCTION DOCUMENTS



**BKF**  
ENGINEERS | SURVEYORS | PLANNERS

1646 N. CALIFORNIA BLVD  
SUITE 400  
WALNUT CREEK, CA 94596  
PHONE 925-940-2200  
FAX 925-940-2299

Date 07/18/18 Scale 1" = 20' Job No. 20145190  
Design CG Drawn CC/SC Approved DS/ES



**CROSS ALAMEDA TRAIL  
MAIN STREET TO CONSTITUTION WAY  
CIVIL NOTES, LEGENDS AND ABBREVIATIONS**

CITY OF ALAMEDA      ALAMEDA COUNTY      CALIFORNIA

Sheet Number:  
**C0.01**



**HORIZONTAL CONTROL KEYNOTES**

- 1 CURB AND GUTTER PER CITY OF ALAMEDA STANDARD DWG 6297
- 2 OMIT THIS KEYNOTE
- 3 VERTICAL CURB PER DETAIL 6 SHEET C7.03
- 4 6" DETECTABLE DIRECTIONAL STRIP; SEE SPECS
- 5 NOT USED
- 6 NOT USED
- 7 NOT USED
- 8 NOT USED
- 9 NOT USED
- 10 METAL U-BAR PEDESTRIAN BARRICADE PER CALTRANS DETAIL RSP ES-7Q, TYPE I
- 11 REMOVABLE BOLLARDS. DETAIL 2 SHEET C7.06
- 12 RELOCATE AC TRANSIT BUS STOP POLE AND SIGNS. CONTRACTOR TO COORDINATE WITH CITY OF ALAMEDA
- 13 CURB RAMP PER CALTRANS STANDARD A88A
- 14 GREEN TRUNCATED DOMES
- 15 YELLOW TRUNCATED DOMES
- 16 MOUNTABLE CURB ISLAND PER DETAIL 1 SHEET C7.06
- 17 BEVELED CURB PER DETAIL 8 SHEET C7.03

**GRADING NOTES**

- APPROXIMATE GRADING QUANTITY IS: CUT AND FILL. THE EARTHWORK ESTIMATED QUANTITY IS BASED UPON EXISTING AND PROPOSED FINISHED GRADE ELEVATIONS. THE ACTUAL AMOUNT OF EARTHWORK MAY VARY FROM THIS CALCULATED AMOUNT DEPENDING UPON SUCH VARIABLE AS COMPACTION, SHRINKAGE, THE SUBCONTRACTOR'S METHODS OF OPERATION, AND THE ACCURACY OF THE SUBCONTRACTORS METHOD OF EARTHWORK TAKEOFF.  
  

APPROXIMATE EARTHWORK QUANTITIES:	
CUT TO BURIAL=	6,000 CU. YDS.
CLEAN FILL=	13,000 CU. YDS.
- ROUND ALL CUT AND FILL SLOPES INTO EXISTING CONTOURS TO ACHIEVE A NATURAL EFFECT.
- QUANTITIES PROVIDED FOR INFORMATION ONLY. CONTRACTOR SHALL NOT RELY ON THE ENGINEERS ESTIMATE FOR THEIR BID AND SHALL PERFORM THEIR OWN INDEPENDENT QUANTITY ESTIMATE.
- ALL GRADE CALLOUTS ARE TO FINISH GRADE UNLESS OTHERWISE NOTED.
- TRAIL SHALL HAVE A MAXIMUM CROSS SLOPE OF 2% PER TYPICAL SECTIONS SHEET C2.01. WHEN TRANSITIONING THE CROSS SLOPE FROM ONE DIRECTION TO THE OTHER DIRECTION, A MINIMUM TRANSITION DISTANCE OF 50 FEET SHALL BE UTILIZED ALLOWING A GRADUAL CHANGE IN THE CROSS SLOPE OF THE TRAIL.

**PAVING, GRADING, AND UTILITY LEGEND**

- LIMIT OF WORK
- - - CENTERLINE OF TRAIL
- ASPHALT CONCRETE PAVING TRAIL SECTION, SEE DT 3 SHT C7.01
- NEW 12" AC SECTION
- 2" GRIND AND OVERLAY
- GREEN THERMOPLASTIC PAVEMENT MARKING
- PORTLAND CEMENT CONCRETE PAVING, SEE DT 4 SHT C7.01
- DECOMPOSED GRANITE PAVING TRAIL SECTION, SEE DT 5 SHT C7.01
- UTILITY ACCESS AND PAVING, SEE DT 10 SHT C7.01
- BIORETENTION AREA, SEE DT 1 SHT C7.03
- VEGETATED BUFFER/SELF RETAINING AREA, SEE DT 7 SHT C7.03
- TRUNCATED DOMES, SEE CALTRANS STD DETAILS
- PROTECT (E) TREES WITHIN THESE LIMITS. REFER TO "EXISTING TREE SECTION" ON SHEET C8.04.
- AC PLUG PER DETAIL 2 SHEET C7.02
- EMERGENCY ACCESS PAVERS
- MOUNTABLE CURB ISLAND. SEE DETAIL 1 SHEET C7.06
- BRICK PAVERS SEE DT 7 SHT C7.01
- STORM DRAIN AREA DRAIN, SEE DT 4 SHT C7.03
- CLEANOUT, SEE DT 3 SHT C7.03
- STORM DRAIN LINE
- PERFORATED STORM DRAIN LINE
- (2) 2" PVC LIGHTING CONDUITS
- DROP INLET (WITH FLOGARD PLUS CATCH BASIN INSERT FILTER OR APPROVED EQUAL), SEE DETAIL 3 SHEET C7.05
- TYPE 1 CATCH BASIN (WITH FLOGARD PLUS CATCH BASIN INSERT FILTER OR APPROVED EQUAL), SEE DETAIL 1 SHEET C7.05
- EX XX.XX EXISTING SURFACE ELEVATION CALL OUT
- PR XX.XX PROPOSED SURFACE ELEVATION CALL OUT
- 1.25% PERCENT SLOPE OF FINISHED GRADE
- 4:1 SLOPE RATIO (HORIZONTAL:VERTICAL)
- L23 & C33 LINE OR CURVE INFORMATION

**STRIPING LEGEND**

- STOP PAVEMENT MARKING PER MUTCD FIGURE 3B-23(CA) (HALF-SIZE)
- AHEAD PAVEMENT MARKING PER MUTCD FIGURE 3B-23(CA) (HALF-SIZE)
- YIELD PAVEMENT MARKING PER MUTCD FIGURE 3B-23(CA) (HALF-SIZE)
- WAIT PAVEMENT MARKING PER MUTCD FIGURE 3B-23(CA) (HALF-SIZE)
- HERE PAVEMENT MARKING PER MUTCD FIGURE 3B-23(CA) (HALF-SIZE)
- YIELD PAVEMENT MARKING PER MUTCD FIGURE 3B-16(CA) (HALF-SIZE)
- TYPE III (L) ARROW PER MUTCD FIGURE 3B-24(CA)
- TYPE III (R) ARROW PER MUTCD FIGURE 3B-24(CA)
- TYPE I LONG STRAIGHT ARROW PER MUTCD FIGURE 9C-3
- HELMETED BICYCLIST PAVEMENT MARKING PER MUTCD FIGURE 9C-3
- LANE PAVEMENT MARKING PER MUTCD FIGURE 9C-3C
- BIKE PAVEMENT MARKING PER MUTCD FIGURE 9C-3C
- PEDESTRIAN PAVEMENT MARKING PER DETAIL 1 SHEET C7.04
- CHEVRON PAVEMENT MARKING PER MUTCD FIGURE 9C-9
- SHARED LANE PAVEMENT MARKING PER MUTCD FIGURE 9C-9
- BICYCLE DETECTOR MARKING PER MUTCD FIGURE 9C-7
- GREEN THERMOPLASTIC PAVEMENT MARKING
- NEW SIGN INSTALLATION (SINGLE SIDED)
- NEW SIGN INSTALLATION (DOUBLE SIDED)
- ACCESSIBILITY MARKING PER MUTCD FIGURE 3B-22

**STRIPING NOTES**

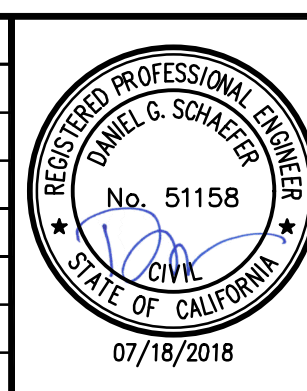
- ALL APPLICATION AND PLACEMENT OF SIGNS FOR THE PEDESTRIAN AND BICYCLE TRAIL SHALL COMPLY WITH THE CALIFORNIA MUTCD 2014 EDITION, CHAPTER 9B.
- ALL PAVEMENT MARKINGS ON THE PEDESTRIAN AND BICYCLE TRAIL SHALL COMPLY WITH THE CALIFORNIA MUTCD 2014 EDITION, CHAPTER 9C.
- ALL PAVEMENT STRIPING AND MARKING SHALL BE THERMOPLASTIC.
- FOR TRAFFIC CONTROL AT INTERSECTIONS, SEE TRAFFIC SIGNAL PLAN, SHEETS C6.01-C6.11.
- TRUNCATED DOMES SHALL BE GREEN FOR THE WIDTH OF THE BICYCLE LANE AT ANY LOCATION WHERE A GREEN THERMOPLASTIC LANE TERMINATES AT A CURB RAMP. ALL SHARED BICYCLE-PEDESTRIAN RAMP SHALL HAVE A MINIMUM OF 5' WIDE YELLOW TRUNCATED DOMES FOR PEDESTRIAN USE, AS SHOWN IN PLAN SHEETS C3.01 TO C3.15.

**STRIPING KEYNOTES**

- 1 4" WIDE SOLID YELLOW LINE PER MUTCD FIGURE 9C-2B
- 2 4" WIDE BROKEN YELLOW LINE PER MUTCD FIGURE 9C-2A
- 3 4" WIDE SOLID WHITE LINE PER MUTCD SECTION 9C.03
- 4 6" WIDE DOTTED WHITE LINE PER CALTRANS DETAIL 40 (1-FOOT LINE SEGMENTS AND 6-FOOT GAPS)
- 5 6" WIDE SOLID WHITE LINE PER CALTRANS DETAIL 39 - BIKE LANE LINE
- 6 12" WIDE SOLID WHITE LINE (STOP LINE) PER CALTRANS A24E
- 7 WHITE CROSSWALK MARKING PER CALTRANS A24F (24" WIDE AND SEPARATED BY 24" GAPS)
- 8 R1-1 (STOP SIGN) PER MUTCD FIGURE 9B-2
- 9 M4-14 ABOVE D11-1 (BEGIN BIKE PATH) PER MUTCD FIGURE 9B-4
- 10 M4-6 ABOVE D11-1 (END BIKE PATH) PER MUTCD FIGURE 9B-4
- 11 W11-15 ABOVE TRAIL MERGE SIGN PER DETAIL 2 SHEET C7.04
- 12 W11-15 ABOVE W11-15P ABOVE W16-7P (TRAIL X-ING HERE) PER MUTCD FIGURE 9B-3
- 13 W11-15 ABOVE W11-15P ABOVE W16-9P (TRAIL X-ING AHEAD) PER MUTCD FIGURE 9B-3
- 14 YELLOW CROSSWALK MARKING PER CALTRANS A24F (24" WIDE AND SEPARATED BY 24" GAPS)
- 15 R1-2 YIELD SIGN (HALF SIZE)
- 16 R5-1 (DO NOT ENTER) ABOVE R5-11 (AUTHORIZED VEHICLES ONLY) PER MUTCD FIGURE 2B-11
- 17 RELOCATED SIGN R26 (NO PARKING ANY TIME)
- 18 YIELD PAVEMENT MARKING PER CALTRANS A24E (FULL SIZE)
- 19 CLASS 1 FLEXIBLE POST DELINEATOR PER CALTRANS STANDARD DETAIL A73C
- 20 R10-15 VEHICLES TURNING RIGHT, YIELD TO PEDESTRIANS PER MUTCD FIGURE 2B-27
- 21 W11-1 (BIKE WARNING SIGN) PER MUTCD FIGURE 2C-10
- 22 RELOCATED AC TRANSIT BUS STOP SIGN. CONTRACTOR SHALL COORDINATE WITH AC TRANSIT.
- 23 R1-5 (YIELD HERE TO PEDESTRIANS) PER MUTCD FIGURE 2B-2
- 24 R4-7 (OBJECT MARKERS) PER MUTCD FIGURE 2B-10
- 25 ACCESSIBLE MARKINGS PER CALTRANS A90A
- 26 W11-2 (PEDESTRIAN) AND W16-7P (ARROW) PER MUTCD FIGURE 3B-17
- 27 GREEN THERMOPLASTIC PAINT, SEE STRIPING LEGEND.
- 28A R9-7 (BIKES KEEP LEFT/PEDESTRIANS KEEP RIGHT) PER MUTCD FIGURE 9B-2
- 28B R9-7 REVERSE (PEDESTRIANS KEEP LEFT/BIKES KEEP RIGHT) PER MUTCD FIGURE 9B-2
- 29 R3-7R (RIGHT LANE MUST TURN RIGHT) PER MUTCD FIGURE 2B-4
- 30 R2-1 (SPEED LIMIT 25 MPH) PER MUTCD FIGURE 2B-3.
- 31 R4-4 (BEGIN RIGHT TURN LANE YIELD TO BIKES) PER MUTCD FIGURE 9B-2
- 32 "DISMOUNT BIKES" SIGN PER ROAD TRAFFIC SIGNS PART #K-6379 OR APPROVED EQUAL
- 33 R10-22 (TO REQUEST GREEN WAIT ON DETECTOR) PER MUTCD FIGURE 9B-2
- 34 DASHED WHITE LANELINE EXTENSIONS THROUGH INTERSECTION PER DETAIL 40 PER CALTRANS STANDARD PLAN A20D
- 35 MODIFIED R10-15 (WITH BICYCLE SYMBOL)
- 36 SOLID 8" WHITE STRIPE PER CALTRANS DETAIL 38A
- 37 BROKEN 6" WHITE STRIPE PER CALTRANS DETAIL 8
- 38 R10-11 (NO TURN ON RED) PER MUTCD FIGURE 2B-27
- 39 DOUBLE YELLOW STRIPE PER CALTRANS DETAIL 22
- 40 R9-6 (YIELD TO PED) PER MUTCD FIGURE 9B-2
- 41 R9-5 (BIKE USE PED SIGNAL) PER MUTCD FIGURE 9B-2

DRAWING NAME: \\BKF-WC\vol4\2014\145190\_Alameda\_Cross\_Alameda\_Trail\ENG\SHEETS\00\_A.TNT.dwg  
PLOT DATE: 07-18-18 PLOTTED BY: chr

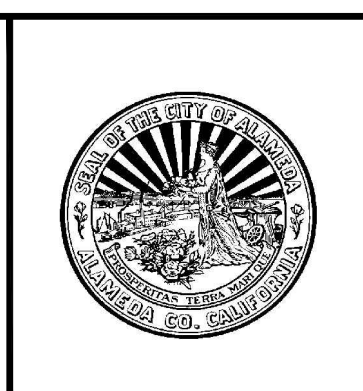
No.	Date	Revisions
	07/18/2018	CONSTRUCTION DOCUMENTS



**BKF**  
ENGINEERS | SURVEYORS | PLANNERS

1646 N. CALIFORNIA BLVD  
SUITE 400  
WALNUT CREEK, CA 94596  
PHONE 925-940-2200  
FAX 925-940-2299

Date	07/18/18	Scale	1" = 20'	Job No.	20145190
Design	CG	Drawn	CC/SC	Approved	DS/ES



**CROSS ALAMEDA TRAIL  
MAIN STREET TO CONSTITUTION WAY  
CIVIL NOTES, LEGENDS AND ABBREVIATIONS**

CITY OF ALAMEDA      ALAMEDA COUNTY      CALIFORNIA

Sheet Number:  
**C0.02**



**GENERAL NOTES**

1. SETS OF THESE PLANS AND PROJECT SPECIFICATIONS, TOGETHER WITH ANY NECESSARY REVISIONS THERETO, WILL BE KEPT ON FILE, IN THE OFFICE OF THE CITY ENGINEER AND THE PROJECT CONSTRUCTION MANAGER.
2. ALL WORK SHALL BE PERFORMED AND COMPLETED TO THE SATISFACTION OF THE CITY ENGINEER, THE CITY, AND ITS REGULARLY APPOINTED AGENTS, SHALL, AT ALL TIMES DURING THE PROGRESS OF WORK, HAVE FREE ACCESS THERETO AND SHALL BE ALLOWED TO EXAMINE SOME AND/OR ALL MATERIALS TO BE FILLED THEREIN. LADDERS OR MANLIFTS WILL BE PROVIDED BY CONTRACTOR AT THE CITY'S REQUEST AT NO CHARGE TO THE CITY.
3. ELEVATIONS ARE BASED ON CITY OF ALAMEDA DATUM. PROJECT BENCHMARK IS USC&GS DISK "MAIN-ATL" LOCATED AT THE INTERSECTION OF MAIN STREET AND ATLANTIC AVENUE, ELEVATION 3.25 FEET.
4. ALL WORK SHALL BE DONE IN COMPLIANCE WITH THE ALAMEDA COUNTY WIDE NPDES MUNICIPAL STORM WATER PERMIT NO. CA50029831 AND WITH THE STATE WATER RESOURCES CONTROL BOARD NPDES GENERAL PERMIT FOR STORMWATER DISCHARGES ASSOCIATED WITH CONSTRUCTION AND LAND DISTURBING ACTIVITIES, PERMIT NO. CA5000002. STORM WATER DISCHARGE, EROSION AND DUST CONTROL MEASURES SHALL BE IMPLEMENTED IN ACCORDANCE WITH THE PROJECT STORM WATER POLLUTION PREVENTION PLAN (SWPPP) AND MONITORING PROGRAM USING BEST MANAGEMENT PRACTICE GUIDELINES. MONITORING PROGRAM USING BEST MANAGEMENT PRACTICE GUIDELINES.
5. ALL WORK SHALL BE DONE IN COMPLIANCE WITH BAAQMD CONSTRUCTION PRACTICES.
6. ELEVATIONS AND LOCATIONS OF ALL EXISTING UTILITIES SHALL BE VERIFIED BY THE CONTRACTOR PRIOR TO START OF ANY CONSTRUCTION AFFECTING SAID LINES. CONTRACTOR SHALL CONTACT USA(UNDERGROUND SERVICE ALERT) AT (800)642-2444 FORTY-EIGHT (48) HOURS PRIOR TO BEGINNING WORK TO VERIFY EXISTING UNDERGROUND UTILITIES. USA TO BE CALLED PRIOR TO START OF EACH NEW PHASE OF WORK BY EACH CONTRACTOR AND EACH SUBCONTRACTOR PRIOR TO ANY EXCAVATIONS.
7. THE CONTRACTOR SHALL POT HOLE TO VERIFY LOCATIONS AND INVERTS OF ALL CONNECTIONS TO EXISTING STRUCTURES PRIOR TO INSTALLATION AND NOTIFY THE ENGINEER OF ANY DISCREPANCIES. IF CONTRACTOR ELECTS TO NOT POT HOLE PRIOR TO EXCAVATION AND AN UNFORESEEN CONDITION ARISES, ALL COST AND SCHEDULE IMPACTS AS A RESULT OF NOT POT HOLE WILL BE BORNE BY CONTRACTOR.
8. CONTRACTOR SHALL SATISFY HIMSELF AS TO THE CORRECTNESS OF THE EXISTING TOPOGRAPHY PREPARED BY BKF ENGINEERS AND OTHER SITE CONDITIONS PRIOR TO CONSTRUCTION.
9. CONTRACTOR IS RESPONSIBLE FOR FILING ENCROACHMENT PERMITS WITH THE CITY OR OTHER AGENCIES THAT APPLY FOR ALL OFF-SITE WORK IN PUBLIC STREET RIGHT-OF-WAYS.
10. CONTRACTOR SHALL COORDINATE WITH THE CITY OF ALAMEDA PUBLIC WORKS DEPARTMENT ON THE SCHEDULING OF DUST CONTROL METHODS AND LIMITED WATER USE AS REQUIRED BY THE CITY'S WATER CONSERVATION ORDINANCE.
11. EXISTING PEDESTRIAN WALKWAYS, BIKE PATHS AND HANDICAP ACCESS PATHWAYS SHALL BE MAINTAINED DURING CONSTRUCTION TO THE SATISFACTION OF THE CITY. CONTRACTOR SHALL MAKE ARRANGEMENTS WITH THE CITY AND AC TRANSIT FOR TEMPORARY MODIFICATION TO BUS SERVICE AND SCHEDULE.
12. SHOULD IT APPEAR THAT THE WORK TO BE DONE OR ANY MATTER RELATIVE THERETO IS NOT SUFFICIENTLY DETAILED OR SPECIFIED IN THE CONSTRUCTION DOCUMENTS, THE CONTRACTOR SHALL NOTIFY THE CITY AND BKF ENGINEERS IN WRITING AND TELEPHONE AT (925)940-2200 BEFORE PROCEEDING WITH THE WORK IN QUESTION.
13. IF TEMPORARY LANE CLOSURES ARE REQUIRED FOR CONSTRUCTION OPERATIONS, THE CONTRACTOR SHALL PREPARE A TRAFFIC CONTROL PLAN AND OBTAIN APPROVAL FROM THE CITY ENGINEER BEFORE COMMENCING WORK. THE CONTRACTOR SHALL ALSO PROVIDE FLAGMEN, CONES, ARROW BOARDS OR BARRICADES AS NECESSARY TO CONTROL TRAFFIC AND PREVENT HAZARDOUS CONDITIONS PER CALTRANS, WORK AREA TRAFFIC CONTROL HANDBOOK AND CAL-OSHA SPECIFICATIONS.
14. PRIOR TO ACCEPTANCE OF WORK, THE CONTRACTOR SHALL REPAIR AND REPLACE TO CITY STANDARDS ANY PUBLIC STREETS, CURBS, GUTTERS AND SIDEWALKS DAMAGED BY CONTRACTOR DURING CONSTRUCTION OF THE PROJECT. ALL DAMAGE TO EXISTING CURBS, PAVEMENT, SIDEWALKS, AND ALL EXISTING PUBLIC IMPROVEMENTS ARE ASSUMED TO BE BY CONTRACTOR UNLESS PROOF IS PROVIDED BY PHOTOGRAPHS AND/OR VIDEOTAPE THAT THE DAMAGE IN QUESTION WAS IN EXISTENCE PRIOR TO THE START OF WORK OR THIS DAMAGE WAS DONE BY OTHERS. ANY DAMAGE TO LIFE SAFETY DEVICES SUCH AS TRAFFIC LIGHTS, TRAFFIC SIGNALS, TRAFFIC SIGNAGE, AND FIRE HYDRANTS SHALL BE REPAIRED IMMEDIATELY OR TEMPORARY FACILITIES WILL BE PROVIDED BY CONTRACTOR UNTIL THE APPROPRIATE AGENCY CAN MAKE THE REPAIRS. THE CITY SHALL BE HELD HARMLESS DUE TO DAMAGES BY CONTRACTOR. CALL CITY MAINTENANCE DIVISION AT (510) 748-4520 TO MAKE ALL NECESSARY MODIFICATIONS TO THE TRAFFIC CONTROLLER PRIOR TO, AND AFTER, CONSTRUCTION HAS BEEN COMPLETED.

15. BLOWING DUST SHALL BE REDUCED BY TIMING CONSTRUCTION ACTIVITIES SO THAT PAVING BEGINS AS SOON AS POSSIBLE AFTER COMPLETION OF GRADING, AND BY LANDSCAPING DISTURBED SOILS AS SOON AS POSSIBLE. FURTHER, WATER TRUCKS SHALL BE PRESENT AND IN USE AT THE CONSTRUCTION SITE. ALL PORTIONS OF THE SITE SUBJECT TO BLOWING DUST SHALL BE WATERED AS OFTEN AS DEEMED NECESSARY BY THE CITY IN ORDER TO INSURE PROPER CONTROL OF BLOWING DUST FOR THE DURATION OF THE PROJECT. WATERING ON PUBLIC STREETS SHALL NOT OCCUR.
16. STREETS WILL BE CLEANED BY STREET SWEEPERS OR BY HAND DAILY AND AS OFTEN AS DEEMED NECESSARY BY THE CITY ENGINEER. ALL PUBLIC STREETS AND MEDIANS SOILED OR LITTERED DUE TO THIS CONSTRUCTION ACTIVITY SHALL BE CLEANED AND SWEEPED ON A DAILY BASIS DURING THE WORK WEEK TO THE SATISFACTION OF THE CITY. IN CASES OF NONCOMPLIANCE OF ADEQUATE CLEANING OF THE STREETS, THE CONTRACTOR WILL BE GIVEN 24 HOUR NOTICE. IF NO ACTION IS TAKEN BY THE CONTRACTOR, COMPANY WILL PERFORM THE NECESSARY SERVICES AT THE CONTRACTOR'S EXPENSE.
17. ADDITIONALLY, THE BAAQMD HAS PREPARED A LIST OF FEASIBLE CONSTRUCTION DUST CONTROL MEASURES THAT CAN REDUCE CONSTRUCTION IMPACTS. THESE MEASURES SHALL BE FOLLOWED THROUGHOUT THE DURATION OF CONSTRUCTION ACTIVITY CONSISTENT WITH MITIGATION MEASURES IDENTIFIED IN THE MITIGATION MONITORING PROGRAM. THE CONSTRUCTION MANAGER MAY ORDER ALL GRADING AND/OR TRENCHING OPERATIONS STOPPED UNTIL THE DUST PROBLEM IS ELIMINATED. ANY TIME DELAY AND LOST COST WILL BE ENTIRELY AT THE CONTRACTOR'S EXPENSE AND THE LOST TIME WILL BE MADE UP ON OVERTIME OR BY ACCELERATION OF SCHEDULE. THE CONTRACTOR SHALL BE RESPONSIBLE FOR CLEANING ADJACENT PROPERTIES SHOULD IT BE DETERMINED THAT THE CONTRACTOR ACTIVITIES LED TO DUST ACCUMULATION. THE LEVEL OF UNACCEPTABLE DUST ACCUMULATION SHALL BE DETERMINED BY CITY REPRESENTATIVES.
18. THE CONTRACTOR SHALL NOTIFY THE ENGINEER-OF-RECORD AND CITY REPRESENTATIVES IN WRITING, AT LEAST 48 HOURS PRIOR TO COMMENCING WORK OF ALL DIFFERENCES BETWEEN THE FIELD CONDITIONS AND THE DESIGN INDICATED ON THE PLANS. COMMENCEMENT OF THE RELATED WORK SHALL BE SUBJECT TO THE APPROVAL OF THE ENGINEER-OF-RECORD AND THE CITY BEFORE ALTERED WORK IS STARTED.
19. CONTRACTOR SHALL HAVE A SUPERINTENDENT OR COMPETENT PERSON ON SITE AT ALL TIMES DURING CONSTRUCTION.
20. ALL WORK SHALL CONFORM TO THE APPLICABLE CITY/DISTRICT CODES. SUPERINTENDENT OF CONSTRUCTION SHALL BE DILIGENTLY PERFORMED BY A PERSON OR PERSONS AUTHORIZED TO DO SO AT ALL TIMES DURING WORKING HOURS. THE STORING OF GOODS, EQUIPMENT AND/OR MATERIALS ON THE PUBLIC SIDEWALK AND/OR A PUBLIC STREET SHALL NOT BE ALLOWED UNLESS A SPECIAL PERMIT IS ISSUED BY THE ENGINEERING DIVISION.
21. THE CONTRACTOR SHALL OBTAIN ANY PERMITS REQUIRED BY THE CITY OF ALAMEDA OR WITH OTHER AGENCIES AS REQUIRED FOR HAULING ON LOCAL STREETS AND SHALL ADHERE TO THE PAVEMENT RESTORATION POLICIES AS DESCRIBED IN THE CONTRACT DOCUMENTS.
22. AT THE REQUEST OF CITY REPRESENTATIVES, THE CONTRACTOR SHALL NOTIFY ALL PROPERTY OWNERS, TENANTS, AND OTHER AGENCIES OF THIS PROJECT PRIOR TO THE START OF WORK.
23. CONTRACTOR SHALL BE RESPONSIBLE FOR PROTECTION, REPLACEMENT, OR REPAIR OF IRRIGATION SYSTEM DAMAGED DURING DEMOLITION OR CONSTRUCTION.
24. CONTRACTOR SHALL COMPLY TO ALL OSHA SAFETY REGULATIONS PERTAINING TO THE TYPE OF CONSTRUCTION PERFORMED ON THIS PROJECT.
25. CONTRACTOR IS SOLELY RESPONSIBLE TO REPAIR OR REPLACE ADJACENT LANDSCAPE AND LANDSCAPING FEATURES TO THEIR ORIGINAL CONDITION IF DAMAGED OR DESTROYED AS A RESULT OF THIS PROJECT.
26. CONTRACTOR SHALL BE RESPONSIBLE FOR REMOVING ALL SPOILS GENERATED THROUGH THE CONTRACT ACTIVITIES FROM THE JOB SITE, UNLESS OTHERWISE SHOWN TO REMAIN ON-SITE.
27. CONTRACTOR SHALL BEWARE OF POSSIBLE HAZARDOUS MATERIALS SUCH AS BUT NOT LIMITED TO MARSH CRUST, CREOSOTE RAILROAD TIES AND TRANSITE PIPE AND ADHERE TO SAFE WORK PRACTICES.
28. MANHOLE FRAMES, INLETS, AND OTHER STRUCTURES IN PAVED AREAS SHALL BE ADJUSTED AFTER FINAL PAVING, CURB PLACEMENT, OR SIDEWALK COMPLETION. ALL SURFACE ITEMS IN NON PAVING AREA TO BE SET TO FINAL GRADE AFTER LANDSCAPING FINAL GRADING.

29. **TRENCHES AND EXCAVATIONS**  
TRENCHING SPECIFICATIONS FOR BAY MUD SITES ARE USUALLY RESTRICTIVE ABOUT EXCAVATION METHODS AND SHORING REQUIREMENTS. ALL CONTRACTORS SHOULD CAREFULLY REVIEW THE TECHNICAL SPECIFICATIONS PROVIDED FOR THE PROJECT. THE FOLLOWING OBSERVATIONS AND GUIDELINES ARE PRESENTED AS A SUPPLEMENT TO THE TECHNICAL SPECIFICATIONS:  
A. THE FILL SHOULD BE SEGREGATED WHEN PERFORMING EXCAVATIONS. MOST CONTRACTORS ACCOMPLISH THIS BY PLACING THE FILL ON ONE SIDE OF THE TRENCH AND EXCAVATED BAY MUD ON THE OTHER.  
C. TRENCHES THAT EXTEND INTO THE BAY MUD SHOULD BE BACKFILLED AS SOON AS POSSIBLE AFTER PLACEMENT OF UTILITIES TO PREVENT BASE HEAVE OR TRENCH SLOUGHING. SIGNIFICANT LATERAL MOVEMENTS OF EXCAVATION WALLS CAN OCCUR IF THE TRENCHES ARE LEFT OPEN FOR EXTENDED PERIODS.  
D. THE CONTRACTOR SHOULD CAREFULLY READ AND UNDERSTAND CITY AND PROJECT TRENCH BACKFILL SPECIFICATIONS IN REGARD TO FILL MATERIALS AND COMPACTION REQUIREMENTS.  
E. GLORY HOLE EXCAVATIONS AND V-TRENCHING SHALL NOT BE PERFORMED. THEY RESULT IN LARGE QUANTITIES OF HEAVY BACKFILL THAT CAN CAUSE LONG-TERM DIFFERENTIAL SETTLEMENTS.
30. **SHALLOW UTILITIES**  
UNDERGROUND UTILITIES CAN BE SUBJECT TO DAMAGE FROM HEAVY EQUIPMENT. FOR GRAVITY FLOW UTILITIES SUCH AS SEWER AND STORM DRAIN, THE PIPES USUALLY BECOME SHALLOWER TOWARD THE REAR OF THE SITES. FURTHER FROM THE MAIN CONNECTIONS ON ROADWAYS, WHERE PIPES HAVE RELATIVELY THIN SOIL COVER, THEY CAN BE DAMAGED FROM HEAVY EARTHWORK EQUIPMENT UNDER CERTAIN CONDITIONS. WHEN BACKFILL HAS BEEN PROPERLY PLACED AND COMPACTED OVER SHALLOW PIPES, THE RISK OF DAMAGE FROM NORMAL EQUIPMENT WHEEL LOADS IS USUALLY SMALL. IF THE FILL IS ALLOWED TO BECOME SATURATED FROM PONDED WATER, HOWEVER, SUCH AS RAINFALL OR WASH OUT FROM CONCRETE TRUCKS, SIGNIFICANT RUTTING CAN OCCUR. THE FOLLOWING OBSERVATIONS AND GUIDELINES SHALL BE USED:  
A. SHALLOW PIPES SHOULD BE ADEQUATELY BACKFILLED TO THE SUBGRADE LEVEL IN ROADWAY AREAS AND SHOULD NOT BE LEFT LOW.  
B. HEAVY EQUIPMENT SUCH AS LOADED TRUCKS, FORKLIFTS, OR CONCRETE TRUCKS SHOULD NOT BE ALLOWED TO DRIVE THROUGH AREAS WHERE THE SUBGRADE SOILS HAVE BECOME WET. DAMAGE TO PIPES BY FORKLIFTS AND CONCRETE TRUCKS MAY NOT BE DISCOVERED UNTIL MONTHS LATER.  
C. WHERE HEAVY EQUIPMENT CANNOT BE AVOIDED, LATERALS SHOULD BE CLEARLY MARKED AND AVOIDED TO PREVENT DAMAGE.
31. **COMPACTION REQUIREMENTS**  
A. THE UPPER 12 INCHES OF SOIL SUBGRADE BENEATH ASPHALT AND CONCRETE PAVEMENT SHOULD BE MOISTURE CONDITIONED TO ABOVE OPTIMUM MOISTURE CONTENT AND COMPACTED TO AT LEAST 95 PERCENT RELATIVE COMPACTION IN AREAS OF CLAYEY FILL WITH A PI GREATER THAN 20, AND SHOULD BE FIRM AND NONYIELDING. IMPORTED FILL, SANDY FILL, OR CLAY WITH A PI LESS THAN 20 SHOULD BE COMPACTED TO AT LEAST 95 PERCENT RELATIVE COMPACTION IN THE UPPER SIX INCHES.  
B. AGGREGATE BASE BENEATH ASPHALT AND CONCRETE PAVEMENT THAT WILL RECEIVE VEHICULAR TRAFFIC (INCLUDING GUTTERS) SHOULD BE COMPACTED TO AT LEAST 95 PERCENT RELATIVE COMPACTION.  
C. SUBGRADE SOIL AND AGGREGATE BASE BENEATH SIDEWALKS SHOULD BE COMPACTED TO AT LEAST 90 PERCENT RELATIVE COMPACTION.

**STORM DRAIN NOTES**

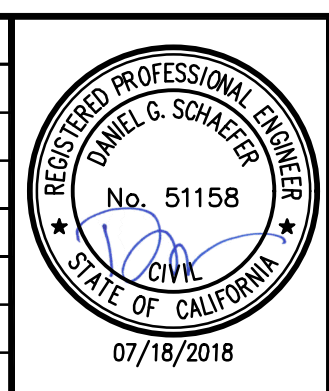
1. ALL PIPES SHALL BE LAID ACCURATELY ACCORDING TO THE LINES AND GRADES SHOWN ON THE PLANS.
3. PIPE ENDS AND FITTINGS SHALL BE CLEAN AND FREE FROM SAND OR DIRT WHEN THE JOINTS ARE MADE. JOINTS SHALL BE IN ACCORDANCE WITH THE MANUFACTURERS SPECIFICATIONS.
4. FOR TRENCH WIDTHS INFORMATION, REFER TO TRENCH WIDTH TABLE, DETAIL 3, SHEET 7.02.
5. TRENCH BACKFILLING SHALL BE IN ACCORDANCE WITH CITY OF ALAMEDA STANDARDS OR AS PER THE GEOTECHNICAL REPORTS (SEE NOTE 5, SHEET 0.03).
6. IT SHALL BE THE CONTRACTOR'S RESPONSIBILITY TO PROVIDE SHEETING, SHORING AND DEWATERING.
7. FOR STORM PIPE AND JOINT MATERIALS, REFER TO PROJECT PLANS AND PROJECT SPECIFICATIONS-STORM DRAINAGE 02720.
8. CATCH BASINS SHALL BE STANDARD CITY OF ALAMEDA, TYPE 1, CATCH BASINS CONFORMING TO DRAWING 6980, CASE 14, UNLESS OTHERWISE SHOWN ON PLAN. GRATE CATCH BASINS SHALL CONFORM TO DRAWING 6703B, CASE 14, UNLESS OTHERWISE SHOWN ON PLAN.
9. STORM DRAIN MANHOLES SHALL BE TYPE A PER CITY STANDARD DRAWING 2815, CASE 34; UNLESS OTHERWISE NOTED ON PLAN.
10. PIPES CONNECTING TO EXISTING STRUCTURES SHALL BE GROUTED SMOOTH FLUSH WITH THE EXISTING INTERIOR STRUCTURE WALL. VOIDS BETWEEN STRUCTURES AND PIPE WALL SHALL BE FILLED WITH PCC GROUT TO THE SATISFACTION OF THE CITY INSPECTOR.
11. ALL STORM DRAIN INLETS SHALL BE STENCILED WITH BLUE THERMOPLASTIC LETTERING ON WHITE BACKGROUND LABELED "NO DUMPING! DRAINS TO BAY".
12. STORM DRAIN SYSTEM SHALL BE WATERTIGHT AND ALL WATER INTRUSION SHALL BE INSPECTED AND PLUGGED. INSPECTION SHALL TAKE PLACE AT HIGH TIDE. 25% OF DRAIN SYSTEM SHALL BE VIDEOTAPE PRIOR TO ACCEPTANCE AND AT END OF TWO YEAR WARRANTY PERIOD (SPEC 230-7.12). ANY SAG HOLDING WATER DEEPER THAN 1" SHALL BE REPAIRED. ALL PIPE OFFSETS SHALL BE REPAIRED, ALL JOINTS SHALL BE FREE OF MORTAR AND OBSTRUCTIONS, AND ANY PIPE THAT IS NOT ROUND WILL BE REPLACED.

**SIGNAGE AND STRIPING NOTES**

1. FOR SIGNAGE AND STRIPING INFORMATION, REFER TO SHEETS 3.01-3.10.
2. ALL STRIPING SHALL BE CAT-TRACKED PRIOR TO FINAL INSTALLATION. FINAL INSTALLATION OF STRIPING WILL BE ALLOWED ONLY AFTER APPROVAL OF THE STRIPING LAYOUT BY THE PUBLIC WORKS CONSTRUCTION INSPECTOR.

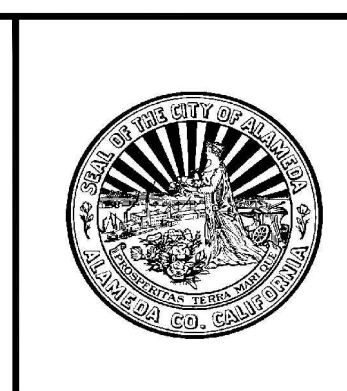
DRAWING NAME: \\BKF-WC\vol4\2014\145190\_Alameda\_Cross\_Alameda\_Trail\ENG\SHEETS\00\_A\TNT.dwg  
PLOT DATE: 07-18-18 PLOTTED BY: chr

No.	Date	Revisions
	07/18/2018	CONSTRUCTION DOCUMENTS



1646 N. CALIFORNIA BLVD  
SUITE 400  
WALNUT CREEK, CA 94596  
PHONE 925-940-2200  
FAX 925-940-2299

Date	07/18/18	Scale	1" = 20'	Job No.	20145190
Design	CG	Drawn	CC/SC	Approved	DS/ES



**CROSS ALAMEDA TRAIL**  
**MAIN STREET TO CONSTITUTION WAY**  
**CIVIL NOTES, LEGENDS AND ABBREVIATIONS**

CITY OF ALAMEDA	ALAMEDA COUNTY	CALIFORNIA
-----------------	----------------	------------

Sheet Number:  
**C0.03**



**GENERAL NOTES**

1. FOR BASIS OF BEARINGS AND BENCH MARK, REFER TO SHEET 0.01.
2. CURB DATA REFERS TO TOP FACE OF CURB.
3. CONTRACTOR SHALL COMPLY WITH ALL CITY OF ALAMEDA LAWS AND ORDINANCES; REGULATIONS OF THE DEPARTMENT OF INDUSTRIAL RELATIONS, O.S.H.A. AND INDUSTRIAL ACCIDENT COMMISSION RELATIONS TO THE SAFETY AND CHARACTER OF THE WORK, EQUIPMENT AND PERSONNEL. THE CITY OF ALAMEDA'S MUNICIPAL CODE CAN BE FOUND AT [http://www.ci.alameda.ca.us/gov/municipal\\_code.html](http://www.ci.alameda.ca.us/gov/municipal_code.html)
4. STREET IMPROVEMENTS SHALL BE CONSTRUCTED IN ACCORDANCE WITH CITY OF ALAMEDA STANDARD SPECIFICATIONS AND STANDARD PLANS. DRAWING # AND CASE # REFER TO CITY OF ALAMEDA STANDARD PLANS. ANY CONFLICT BETWEEN THESE PLANS AND THE CITY OF ALAMEDA STANDARDS SHALL BE BROUGHT TO THE ATTENTION OF THE CITY ENGINEER FOR DETERMINATION AND RESOLUTION.
5. ALL IMPROVEMENTS SHALL BE CONSTRUCTED IN ACCORDANCE WITH PARIKH MEMORANDUM TITLED GEOTECHNICAL ENGINEERING RECOMMENDATIONS, DATED MARCH 30, 2018 AND TETRA TECH, INC. SOIL REMEDIATION WORKPLAN FOR THE CROSS ALAMEDA TRAIL, DATED APRIL 14, 2017.
6. PRIOR TO BEGINNING CONSTRUCTION FOR ANY WORK SHOWN HEREON, THE CONTRACTOR SHALL BE RESPONSIBLE FOR OBTAINING ALL ENCROACHMENT, EXCAVATION, CONCRETE, ELECTRICAL, IRRIGATION, PLUMBING, DEMOLITION, AND ANY OTHER PERMITS REQUIRED BY ANY APPLICABLE AGENCY INCLUDING BUT NOT LIMITED TO BAAQMD AND OSHA.
7. CONTRACTOR SHALL POST EMERGENCY TELEPHONE NUMBERS FOR PUBLIC WORKS, AMBULANCE, POLICE AND FIRE DEPARTMENTS. AND THE CONTRACTOR, A DUPLICATE LIST SHALL BE PROVIDED TO THE PUBLIC WORKS INSPECTOR AT THE TIME OF THE PRECONSTRUCTION MEETING.
8. CONTRACTOR SHALL PROVIDE AND MAINTAIN EROSION CONTROL AND STORMWATER CONTROL MEASURES PER PLAN AND SWPPP.
9. CONTRACTOR SHALL HAVE A SUPERINTENDENT OR COMPETENT PERSON ON SITE AT ALL TIMES DURING CONSTRUCTION.
10. THE LOCATION AND PROTECTION OF ALL UTILITIES IS THE RESPONSIBILITY OF THE CONTRACTOR. CONTACT U.S.A. UNDERGROUND SERVICE ALERT 48 HOURS PRIOR TO ANY EXCAVATION (800-422-4133).
11. THE EXISTENCE AND LOCATION OF ANY UNDERGROUND UTILITIES, PIPELINES OR STRUCTURES SHOWN ON THESE PLANS WERE OBTAINED BY A SURVEY OR BY REVIEW OF EXISTING PLANS. APPROVAL OF THESE PLANS BY BKF OR REVIEW BY CITY ENGINEER DOES NOT CONSTITUTE A REPRESENTATION AS TO THE ACCURACY OR COMPLETENESS OF THE LOCATION OR EXISTENCE OR NON-EXISTENCE OF ANY UNDERGROUND UTILITIES, PIPELINES OR STRUCTURES WITHIN THE LIMITS OF WORK. IT SHALL BE THE
12. THE CONTRACTOR AND SUBCONTRACTORS AGREE THAT THEY ASSUME SOLE RESPONSIBILITY AND COMPLETE RESPONSIBILITY FOR JOB SITE CONDITIONS DURING THE COURSE OF CONSTRUCTION OF THIS PROJECT, INCLUDING SAFETY OF ALL PERSONS AND PROPERTY; AND THAT THE CONTRACTOR SHALL DEFEND, INDEMNIFY AND HOLD THE OWNER, BKF, AND THE CITY OF ALAMEDA HARMLESS FROM ANY AND ALL LIABILITY, REAL OR ALLEGED, IN CONNECTION WITH THE PERFORMANCE OR WORK ON THIS PROJECT, EXCEPTING FOR LIABILITY ARISING FROM THE SOLE NEGLIGENCE OF THE OWNER OR THE ENGINEER.
13. IT SHALL BE THE CONTRACTOR'S RESPONSIBILITY TO COORDINATE CONSTRUCTION WITH THE UTILITY AGENCIES AND THE SUBCONTRACTORS. IT SHALL BE THE CONTRACTOR'S RESPONSIBILITY TO NOTIFY BKF OF ANY DIFFERENCES OF LOCATION OF EXISTING UTILITIES FROM THAT SHOWN, OR ANY CONFLICTS WITH THE DESIGN BEFORE CONTINUING WORK IN THAT AREA. CONTRACTOR SHALL OBTAIN SIGNATURES FROM UTILITY COMPANIES THAT THE WORK HAS BEEN COMPLETED TO THEIR SATISFACTION. OBTAIN SIGNATURE SHEET FROM THE PUBLIC WORKS INSPECTOR.
14. CONTRACTOR IS RESPONSIBLE FOR ENGAGING A CIVIL ENGINEER OR LAND SURVEYOR REGISTERED IN THE STATE OF CALIFORNIA TO SET ALL STAKES AND PROVIDE CUT SHEETS (TO BE APPROVED BY THE CITY ENGINEER) FOR THIS PROJECT. THE CONTRACTOR SHALL REQUEST STAKES 48 HOURS IN ADVANCE. THE CONTRACTOR SHALL CAREFULLY PRESERVE STAKES AND MARKERS. IN CASE SUCH STAKES AND MARKERS ARE DESTROYED OR DAMAGED THEY WILL BE REPLACED AT THE ENGINEER'S EARLIEST CONVENIENCE. THE CONTRACTOR WILL BE CHARGED FOR THE COST OF NECESSARY REPLACEMENT OR RESTORATION OF STAKES AND MARKERS WHICH IN THE JUDGMENT OF THE ENGINEER WERE CARELESSLY OR FULLY DESTROYED OR DAMAGED BY THE CONTRACTOR'S OPERATIONS.
15. PRIOR TO PLACING CURB, SIDEWALK, ASPHALT CONCRETE, SUBBASE OR BASE MATERIAL, ALL UNDERGROUND UTILITIES WITHIN THE RIGHT-OF-WAY SHALL BE INSTALLED (UNLESS BASEROCK IS REQUIRED BY EBMUD PRIOR TO THEIR WORK), BACKFILL COMPLETED, AND THE CITY NOTIFIED BY EACH OF THE UTILITY COMPANIES HAVING FACILITIES WITHIN THE WORK AREA, THAT THE UTILITY INSTALLATION HAS SATISFACTORILY PASSED ACCEPTANCE TESTS.
16. THE CONTRACTOR SHALL EXPOSE (i.e. BY POTHOLING) AND CHECK INVERTS ON EXISTING SEWERS, STORM DRAINS, AND CLEARANCES OF KNOWN CROSSINGS OF OTHER UTILITIES BEFORE CONSTRUCTING NEW PIPELINES. IF THE CONTRACTOR DETERMINES THE EXISTING INVERTS ARE NOT IN CONFORMANCE WITH THE PLANS, OR CROSSING CONFLICTS ARISE, HE SHALL NOTIFY THE ENGINEER AND PUBLIC WORKS INSPECTOR BEFORE PERFORMING ANY WORK.
17. THE CONTRACTOR IS RESPONSIBLE FOR COORDINATING HIS WORK TO AVOID CONFLICTS BETWEEN MAINS AND LATERALS (i.e., STORM DRAINS, SANITARY SEWERS AND WATER MAINS).

18. SHOULD IT APPEAR THAT THE WORK TO BE DONE, OR ANY MATTER RELATIVE THERETO, IS NOT SUFFICIENTLY DETAILED OR EXPLAINED ON THESE PLANS THE CONTRACTOR SHALL CONTACT BKF FOR SUCH FURTHER EXPLANATION AS MAY BE NECESSARY.
19. IT IS THE CONTRACTOR'S RESPONSIBILITY TO NOTIFY BKF AND PUBLIC WORKS INSPECTOR UPON FINDING CONDITIONS IN THE FIELD WHICH ARE AT VARIANCE WITH THE PLANS AND/OR WHICH MAY REQUIRE ALTERING OF THE PLANS PRIOR TO COMMENCEMENT OF WORK.
20. UPON APPROVAL OF THE PLANS AND SPECIFICATIONS BY THE CITY ENGINEER ANY CHANGES TO THE IMPROVEMENT PLANS NECESSITATED DURING CONSTRUCTION SHALL REQUIRE APPROVAL OF THE CITY ENGINEER THROUGH A PLAN REVISION SUBMITTED BY BKF. THE CONTRACTOR SHALL BE HELD RESPONSIBLE FOR ANY FIELD CHANGES MADE WITHOUT WRITTEN AUTHORIZATION FROM BKF AND BY THE CITY ENGINEER.
21. COMPACTION TESTS WILL BE PERFORMED ON ALL TRENCHES AND STREET WORK INCLUDING BUT NOT LIMITED TO SUB-GRADE SOILS, AGGREGATE SUBBASE AND BASE COURSE MATERIALS TO VERIFY THAT COMPACTION CONFORMS TO CITY STANDARDS AND THE GEOTECHNICAL REPORT RECOMMENDATIONS (SEE NOTE 5, SHEET 0.03). TESTING SERVICES SHALL BE PERFORMED BY A CERTIFIED TESTING LABORATORY IN CONFORMANCE WITH THE STATE OF CALIFORNIA DEPARTMENT OF TRANSPORTATION (CALTRANS). SOIL SAMPLING AND TESTING FREQUENCY SHALL CONFORM TO CHAPTER 8 OF THE CALTRANS CONSTRUCTION MANUAL AND AS DIRECTED BY THE GEOTECHNICAL ENGINEER AND/OR CITY ENGINEER. ALL TESTING WILL BE AT THE OWNER'S EXPENSE.
22. ALL RELATIVE COMPACTION TESTS WILL BE SUBJECT TO THE FOLLOWING: a) ANY SCHEDULED RELATIVE COMPACTION TEST THAT IS NOT READY FOR TESTING WITHIN 15 MINUTES OF ARRIVAL OF THE MATERIALS TESTING PERSONNEL SHALL REQUIRE RESCHEDULING. ANY COSTS ASSOCIATED WITH RESCHEDULING SHALL BE BORNE BY THE CONTRACTOR. b) SHOULD ANY RELATIVE COMPACTION TEST FAIL A RETEST SHALL BE REQUIRED. COSTS ASSOCIATED WITH RETESTING SHALL BE BORNE BY THE CONTRACTOR.
23. ANY EXISTING IMPROVEMENTS DAMAGED BY THE CONTRACTOR SHALL BE REPAIRED AND/OR REPLACED BY THE CONTRACTOR AT HIS EXPENSE, TO THE SATISFACTION OF THE CITY ENGINEER. PAVEMENT REPAIR, RECONSTRUCTION, OR FULL ASPHALT CONCRETE OVERLAY WILL BE REQUIRED BY THE CITY ENGINEER FOR PAVEMENT DAMAGED DURING CONSTRUCTION.
24. A PRE-CONSTRUCTION MEETING SHALL BE HELD PRIOR TO THE START OF CONSTRUCTION WITH THE FOLLOWING PEOPLE PRESENT: OWNER, CONTRACTOR, ENGINEER, CITY PUBLIC WORKS INSPECTOR, UTILITY COMPANIES OR THEIR REPRESENTATIVES. CONTACT CITY PUBLIC WORKS INSPECTOR ONE WEEK IN ADVANCE TO SCHEDULE A MEETING.
25. THE CONTRACTOR SHALL NOTIFY THE PUBLIC WORKS INSPECTOR 48 HOURS PRIOR TO PERFORMING WORK REQUIRING INSPECTION. WORK PERFORMED OR COVERED WITHOUT ADEQUATE NOTICE WILL BE SUBJECT TO REJECTION.
26. CONSTRUCTION ACTIVITIES SHALL BE LIMITED TO THE HOURS OF 7:00 A.M. AND 7:00 P.M. MONDAY THROUGH FRIDAY. NOISE-GENERATING CONSTRUCTION ACTIVITIES SHALL BE LIMITED TO THE HOURS OF 8:00 A.M. AND 5:00 P.M.. WORK ON SATURDAYS SHALL REQUIRE SPECIAL APPROVAL OF THE CITY ENGINEER. NO CONSTRUCTION ACTIVITY SHALL BE PERMITTED ON SUNDAYS OR STATE AND FEDERAL HOLIDAYS. WORK REQUIRING INSPECTION AFTER 3:30 P.M. M-F WILL REQUIRE CITY CONSTRUCTION INSPECTION FEE AT TIME AND A HALF (1-1/2). SAID FEE WILL BE IN ACCORDANCE WITH THE LATEST PUBLIC WORKS FEE OVERTIME SCHEDULE. WORK DONE ON SATURDAYS REQUIRING INSPECTION IS PROHIBITED UNLESS APPROVED BY THE CITY ENGINEER AND AN INSPECTOR IS AVAILABLE. INSPECTION FEES FOR SATURDAY WORK WILL BE AT TIME AND A HALF (1-1/2) WITH A FOUR HOUR MINIMUM.
27. ALL CONSTRUCTION VEHICLES SHALL ADHERE TO CITY OF ALAMEDA TRUCK ROUTES. DURING CONSTRUCTION, THE CITY STREETS SHALL BE CLEANED AS OFTEN AS REQUIRED TO REMOVE ANY ACCUMULATION OF MUD AND DEBRIS RESULTING FROM THIS CONSTRUCTION. THE CONTRACTOR SHALL OBTAIN ANY PERMITS REQUIRED BY THE CITY OF ALAMEDA FOR HAULING ON LOCAL STREETS.
28. STORAGE OF CONSTRUCTION MATERIAL AND EQUIPMENT ON CITY STREETS WILL NOT BE PERMITTED.
29. THE CONTRACTOR SHALL PROVIDE ALL LIGHTS, SIGNS, BARRICADES, FLAGMEN, OR OTHER TRAFFIC SAFETY DEVICES NECESSARY TO PROVIDE PUBLIC SAFETY IN ACCORDANCE WITH CALTRANS, WORK AREA TRAFFIC CONTROL HANDBOOK AND CAL-OSHA SPECIFICATIONS. THE CONTRACTOR SHALL PROVIDE A TRAFFIC CONTROL PLAN TO THE APPROVAL OF THE CITY ENGINEER. THE CONTRACTOR SHALL ALLOW A MINIMUM OF 5 WORKING DAYS FOR REVIEW.
30. "NO PARKING" SIGNS ARE AVAILABLE AT THE BUILDING SERVICES OFFICE, ROOM 190, CITY HALL. SIGNS SHALL BE POSTED 48 HOURS IN ADVANCE. A FEE WILL BE CHARGED FOR THE SIGNS. ONLY CITY OF ALAMEDA ISSUED NO PARKING SIGNS WILL BE ALLOWED. THE CONTRACTOR SHALL ALLOW A MINIMUM FIVE WORKING DAYS FOR REVIEW.
31. CONSTRUCTION EQUIPMENT SHALL BE PROPERLY MUFFLED. UNNECESSARY IDLING OF GRADING CONSTRUCTION EQUIPMENT IS PROHIBITED. ALL ENGINE-DRIVEN CONSTRUCTION VEHICLES, EQUIPMENT AND PNEUMATIC TOOLS SHALL BE REQUIRED TO USE EFFECTIVE INTAKE AND EXHAUST MUFFLERS; EQUIPMENT SHALL BE PROPERLY ADJUSTED AND MAINTAINED; ALL CONSTRUCTION EQUIPMENT SHALL BE EQUIPPED WITH MUFFLERS IN ACCORDANCE WITH OSHA STANDARDS CONSISTENT WITH ALAMEDA MUNICIPAL CODE SECTION 4-10.

10. WHERE UNSTABLE OR UNSUITABLE MATERIALS ARE ENCOUNTERED DURING SUBGRADE PREPARATION, THE AREA IN QUESTION SHALL BE OVER-EXCAVATED AND REPLACED WITH SELECT BACKFILL MATERIAL.
11. EXISTING PIPES AND STRUCTURES SHALL BE REMOVED AND NOT ABANDONED IN PLACE, UNLESS NOTED ON PLANS OR WHERE THE EXISTING UTILITY IS REQUIRED TO REMAIN IN SERVICE UNTIL THE NEW REPLACING UTILITY IS OPERATIONAL, THEN AT THE ENGINEER'S OPTION, THE EXISTING UTILITY OR STRUCTURE SHALL BE GROUTED IN PLACE OR REMOVED.
12. THE CONTRACTOR IS RESPONSIBLE FOR MATCHING EXISTING STREETS, SURROUNDING LANDSCAPE AND OTHER IMPROVEMENTS WITH A SMOOTH TRANSITION IN PAVING, CURBS, GUTTER, SIDEWALKS, GRADING, ETC., AND TO AVOID ANY ABRUPT OR APPARENT CHANGES IN GRADES OR CROSS SLOPES, LOW SPOTS, PONDING, OR HAZARDOUS CONDITIONS TO THE SATISFACTION OF THE CITY ENGINEER.
13. WHERE PAVEMENT IS TO BE EXTENDED, EXISTING IMPROVEMENT ENDS MUST BE SAWCUT. NEW CURB, GUTTER AND SIDEWALK SHALL CONFORM AT EXISTING EXPANSION JOINTS OR SCORE LINES AT THE DIRECTION OF THE CITY ENGINEER. PCC CONCRETE CONFORM LIMITS SHALL BE ESTABLISHED IN THE FIELD BY THE PUBLIC WORKS INSPECTOR.
14. GRADING ALONG THE EXTERIOR BOUNDARIES SHALL NOT INTERFERE WITH THE NATURAL DRAINAGE OF THE SURROUNDING AREA.
15. IF ARCHAEOLOGICAL MATERIALS ARE UNCOVERED DURING GRADING, TRENCHING OR OTHER EXCAVATION, EARTHWORK WITHIN 100 FEET OF THESE MATERIALS SHALL BE STOPPED UNTIL A PROFESSIONAL ARCHAEOLOGIST WHO IS CERTIFIED BY THE SOCIETY OF CALIFORNIA ARCHAEOLOGY (SCA), AND/OR THE SOCIETY OF PROFESSIONAL ARCHAEOLOGY (SOPA) HAS HAD AN OPPORTUNITY TO EVALUATE THE SIGNIFICANCE OF THE FIND AND SUGGEST APPROPRIATE MITIGATION MEASURES, IF THEY ARE DEEMED NECESSARY.
16. FILL MATERIAL SHALL BE IN CONFORMANCE TO THE GEOTECHNICAL REPORTS DESCRIBED IN NOTE 5 ON SHEET 0.03.
17. REPAIRS AND SAWCUTS TO FINISH PAVING ARE TO BE AVOIDED. CONTRACTOR TO EVALUATE SHOP DRAWINGS, UTILITY DRAWINGS, FINISH GRADING DRAWINGS, AND EXISTING SURFACE CONDITIONS PRIOR TO FINISH PAVING TO PREVENT SAWCUTS AND REPAIRS TO FINISH PAVING. THIS IS NOT LIMITED TO PONDING, UTILITY HOOKUP, IRRIGATION CROSSINGS, ELECTRICAL TRENCHING, AND SIGNAL LOOP INSTALLATION. LACK OF THOROUGH EVALUATION OF CONDITIONS PRIOR TO PAVING WILL RESULT FULL GRIND AND 2" PAVEMENT TO EXTEND AT A MINIMUM TO THE CROWN OF THE STREET AND THE CURB. LOCALIZED PAVEMENT PATCHING SHALL BE AVOIDED.

**GRADING AND PAVING NOTES**

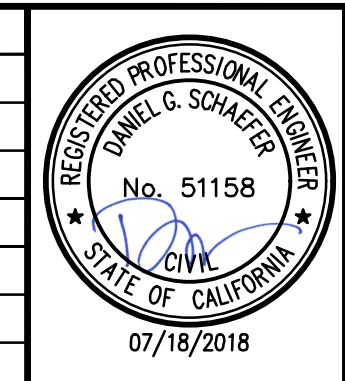
1. NO SITE GRADING SHALL OCCUR BETWEEN OCTOBER 1 AND APRIL 15 UNLESS APPROVED EROSION CONTROL MEASURES ARE IN PLACE.
2. ALL GRADING SHALL BE PERFORMED IN ACCORDANCE WITH THE RECOMMENDATIONS OF THE GEOTECHNICAL REPORTS (SEE NOTE 5, SHEET 0.03) AND SHALL CONFORM TO SECTION 19-1.01, 19-1.02, 19-1.03, 19-2.01 AND 19-2.02 OF THE STATE OF CALIFORNIA DEPARTMENT OF TRANSPORTATION (CALTRANS) STANDARD SPECIFICATIONS, LATEST EDITION.
3. ALL MANHOLE FRAMES AND COVERS, MONUMENT BOXES AND VALVE BOXES SHALL BE SET TO GRADE AFTER FINAL PAVING TO THE SATISFACTION OF THE PUBLIC WORKS INSPECTOR. THE CONTRACTOR SHALL NOTIFY UTILITY COMPANIES, GIVING THEM ADEQUATE NOTICE TO ALLOW THEM TO ADJUST THEIR FACILITIES TO GRADE.
4. ALL STREET INTERSECTIONS ARE TO BE CONSTRUCTED TO GRADES ESTABLISHED BY THE ENGINEER.
5. ASPHALT CONCRETE - SURFACE COURSE SHALL BE 3 / 4 INCH (30MM) MAXIMUM AGGREGATE SIZE ASPHALT CONCRETE AND SHALL MEET THE REQUIREMENTS OF SECTION 39 OF THE CALTRANS STANDARD SPECIFICATIONS. ASPHALT CONCRETE SHALL BE TYPE 'A'. COMPACTING EQUIPMENT SHALL CONFORM TO SECTION 39-5.02, "COMPACTING EQUIPMENT", OF THE STANDARD SPECIFICATIONS.
6. AGGREGATE BASE SHALL BE FURNISHED AS REQUIRED TO CONSTRUCT STREET BASE AND SHALL CONFORM TO SECTION 26, ARTICLES 26-1.01, 26-1.02, 26-1.02A, 26-1.035, 26-1.04 AND 26-1.05 OF THE CALTRANS STANDARD SPECIFICATIONS. MAXIMUM AGGREGATE SIZE SHALL BE 1-1/2 INCHES (60MM).
7. NO TREES SHALL BE REMOVED UNLESS THEY ARE SHOWN AND NOTED TO BE REMOVED ON THE IMPROVEMENT PLANS. POSTING AND NOTIFICATION SHALL BE AS DIRECTED BY THE PUBLIC WORKS MAINTENANCE SUPERINTENDENT. ALL TREES CONFLICTING WITH GRADING, UTILITIES, OR OTHER IMPROVEMENTS, OR OVERHANGING THE SIDEWALK OR PAVEMENT SO AS TO FORM A NUISANCE OR HAZARD, SHALL BE TRIMMED AND PROPERLY TREATED AND SEALED. CONTACT PUBLIC WORKS MAINTENANCE DEPARTMENT AT (510)748-4520 PRIOR TO TRIMMING AND FOR INFORMATION ON POSTING FOR REMOVAL.
8. ANY EXISTING STREETS SAWCUT FOR THE CONNECTION OF UTILITIES OR FORMWORK SHALL BE RECONSTRUCTED PER CITY OF ALAMEDA STANDARD PLAN DRAWING 2930 CASE 22 UNLESS OTHERWISE SHOWN ON PLAN. ALL PAVEMENT CONFORMS SHALL BE MADE WITH A SMOOTH BUTT JOINT.
9. PAVEMENT RESTORATION SHALL EXTEND TO A MAXIMUM 18" BEYOND THE STANDARD PLAN LIMITS WHERE EXISTING ADJACENT PAVEMENT IS RAVELED OR ALLIGATORED. PAVEMENT RESTORATION SHALL INCLUDE SAWCUT, REMOVAL OF ASPHALT CONCRETE, AND REPLACEMENT IN KIND IN CONJUNCTION WITH TRENCH RESTORATION PAVING OR STREET PAVING. THE PERMANENT REPAVING AREA SHALL BE PRE-APPROVED BY THE CITY INSPECTOR. REFER TO CITY STANDARD DETAIL DRAWING 2930, CASE 22, TITLED STANDARD SECTION FOR REPAVING TRENCHES.

**CONCRETE IMPROVEMENTS NOTES**

1. FOR CONCRETE IMPROVEMENTS, REFER TO PROJECT SPECIFICATIONS-CONCRETE IMPROVEMENTS 02550.
2. THE USE OF EXTRUDED CURB AND GUTTER IS NOT ALLOWED. THE CONTRACTOR SHALL USE CONVENTIONAL WOOD FORMS. THE CONTRACTOR SHALL CONTACT THE ENGINEER AND PUBLIC WORKS CONSTRUCTION INSPECTOR TO VERIFY FORM PLACEMENT PRIOR TO PLACING ANY CONCRETE. ROLLED CURB AND GUTTERS ARE NOT ALLOWED.
5. A MINIMUM OF FOUR (4) INCH THICKNESS OF AGGREGATE BASE SHALL BE PLACED UNDER ALL CURB, GUTTER AND LOCAL DEPRESSIONS. THE BASE SHALL BE PROPERLY WATERED AND ROLLED WITH A FULL SIZE ROLLER IN CONFORMANCE WITH THE APPLICABLE PORTIONS OF SECTION 26 OF THE CALTRANS STANDARD SPECIFICATIONS.
6. CONCRETE SIDEWALK SHALL BE FOUR (4) INCH MINIMUM THICKNESS UNLESS A HIGHER THICKNESS IS SPECIFIED IN THE GEOTECHNICAL REPORT. AGGREGATE BASE UNDER SIDEWALK IS NOT REQUIRED UNLESS OTHERWISE INDICATED IN THE GEOTECHNICAL REPORT. REINFORCING SHALL BE REQUIRED IN SIDEWALK UNDER UTILITY BOXES IN ACCORDANCE WITH DRAWING 6080, CASE 22.
7. CURB RAMPS SHALL BE CONSTRUCTED AT THE LOCATIONS SHOWN ON PLAN AND SHALL BE FOUR INCHES THICK; UNLESS OTHERWISE INDICATED BY SPECIAL DETAIL.
8. DRIVEWAYS SHALL BE 4" THICK FOR RESIDENTIAL DRIVEWAYS AND 6" THICK FOR COMMERCIAL DRIVEWAYS UNLESS OTHERWISE NOTED. DRIVEWAY WIDTHS SHALL BE PER STANDARD PLAN DRAWING UNLESS OTHERWISE NOTED ON PLAN.
9. EXISTING CURB, GUTTER AND SIDEWALK WITHIN THE PROJECT LIMITS THAT ARE DAMAGED OR DISPLACED, EVEN THOUGH NOT PROPOSED TO BE REMOVED, SHALL BE REPLACED AS DIRECTED BY THE CITY INSPECTOR. ALL DAMAGE TO STREETS AND CITY INFRASTRUCTURE RESULTING FROM CONSTRUCTION TRAFFIC AND ACTIVITY SHALL BE REPAIRED AND RESTORED AT THE DIRECTION OF THE CITY INSPECTOR. IMPROVEMENTS WILL BE NOT BE ACCEPTED BY THE CITY UNTIL SUCH TIME THAT REPAIRS ARE COMPLETED.
10. ALL CONCRETE WITH EXPOSED SURFACES, SUCH AS SIDEWALK, CURB, GUTTER, LOCAL DEPRESSIONS, DRIVEWAYS, CATCH BASIN TOPS SHALL BE COLORED BY ADDING TO THE MIX A PROPORTIONATE AMOUNT OF THE LAMPBLACK, SUCH PROPORTION TO BE DETERMINED BY THE PUBLIC WORKS INSPECTOR. ALL EXPOSED SURFACES SHALL BE CURED BY THE IMPERVIOUS MEMBRANE METHOD TO THE SATISFACTION OF THE ENGINEER. LIGHT BROOM FINISH ALL SURFACES.

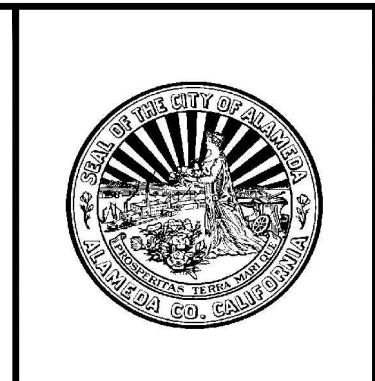
DRAWING NAME: \\BKF-WC\vol4\2014\145190\_Alameda\_Cross\_Alameda\_Trail\ENG\SHEETS\00\_A\TNT.dwg PLOTTED BY: chr 07-18-18

No.	Date	Revisions
	07/18/2018	CONSTRUCTION DOCUMENTS



1646 N. CALIFORNIA BLVD  
SUITE 400  
WALNUT CREEK, CA 94596  
PHONE 925-940-2200  
FAX 925-940-2299

Date	07/18/18	Scale	1" = 20'	Job No.	20145190
Design	CG	Drawn	CC/SC	Approved	DS/ES



## CROSS ALAMEDA TRAIL MAIN STREET TO CONSTITUTION WAY CIVIL NOTES, LEGENDS AND ABBREVIATIONS

CITY OF ALAMEDA
ALAMEDA COUNTY
CALIFORNIA

Sheet Number:  
**C0.04**



BIKEWAY - LINE TABLE		
LINE #	LENGTH	DIRECTION
L1	12.24	S85° 08' 54.80"E
L2	649.12	S87° 28' 56.06"E
L3	823.35	N89° 49' 12.00"E
L4	1900.97	N85° 25' 29.50"W
L5	54.40	N83° 27' 13.43"W
L6	48.12	N83° 23' 45.29"W
L7	105.28	S87° 25' 20.15"W

BIKEWAY - CURVE TABLE			
CURVE #	LENGTH	RADIUS	DELTA
C1	41.10	1009.00	002.3337
C2	54.63	135.00	023.1872
C3	55.09	135.00	023.3795

PLAZA - CURVE TABLE			
CURVE #	LENGTH	RADIUS	DELTA
C51	21.28	71.76	016.9957
C52	9.69	3.65	152.1444
C53	7.46	3.48	122.9523
C54	24.31	32.16	043.3029
C55	15.03	51.50	016.7172
C56	24.15	156.72	008.8298
C57	12.37	178.78	003.9630
C58	11.32	63.85	010.1591
C59	13.35	5.08	150.6438

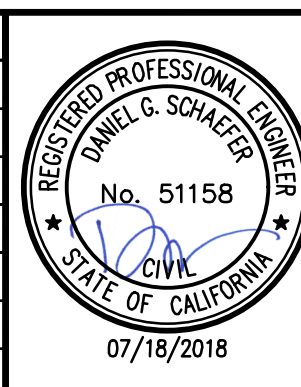
WALKWAY - LINE TABLE		
LINE #	LENGTH	DIRECTION
L1000	230.02	N87° 28' 56.06"W
L1001	51.34	S78° 18' 10.88"W
L1002	33.79	S66° 23' 50.28"E
L1003	134.04	S89° 49' 12.00"W
L1004	132.77	N87° 50' 59.00"W
L1005	34.35	S89° 49' 12.00"W
L1006	17.19	N75° 20' 41.60"W
L1007	119.46	S89° 29' 19.36"W
L1008	54.01	S87° 03' 09.29"W
L1009	36.60	S76° 27' 39.76"W
L1010	35.03	N63° 24' 08.44"W
L1011	160.65	N85° 25' 08.00"W
L1012	3.53	N69° 06' 39.46"W
L1013	269.15	N85° 25' 08.00"W
L1014	87.83	N85° 25' 08.00"W
L1015	3.88	N69° 02' 08.68"W
L1016	241.09	N85° 25' 08.00"W
L1017	205.39	N85° 25' 08.00"W
L1018	371.17	N85° 25' 08.00"W

WALKWAY - CURVE TABLE			
CURVE #	LENGTH	RADIUS	DELTA
C1000	246.42	393.26	035.9022
C1001	46.43	377.00	007.0558
C1002	36.89	229.00	009.2289
C1003	47.00	133.00	020.2482
C1004	89.62	149.00	034.4629
C1005	9.69	203.00	002.7342
C1006	52.72	127.00	023.7827
C1007	32.75	140.00	013.4043
C1008	38.45	140.00	015.7346
C1009	34.76	103.00	019.3337
C1010	43.92	148.00	017.0034
C1011	36.25	140.00	014.8351
C1012	36.53	138.00	015.1664
C1013	21.05	495.00	002.4361
C1014	23.66	128.00	010.5915
C1015	91.87	133.00	039.5782
C1016	42.91	140.00	017.5616
C1017	41.67	140.00	017.0520
C1018	36.09	133.00	015.5473
C1019	39.95	133.00	017.2105
C1020	40.55	135.00	017.2105
C1021	40.53	135.00	017.2013
C1022	36.09	133.00	015.5465
C1023	39.95	133.00	017.2106
C1024	40.55	135.00	017.2106
C1025	42.22	135.00	017.9190
C1026	41.60	133.00	017.9190
C1027	43.66	490.00	005.1053
C1028	69.30	510.00	007.7853
C1029	37.16	330.72	006.4374
C1030	17.79	206.63	004.9335
C1031	24.81	160.72	008.8436
C1032	12.67	182.78	003.9730
C1033	3.34	67.85	002.8197
C1034	57.23	200.47	016.3576

NOTE:  
SEE SHEETS C3.01 TO C3.15 FOR HORIZONTAL LAYOUT OF THE TRAIL.

DRAWING NAME: \\BKF-WC\vol4\2014\145190\_Alameda\_Cross\_Alameda\_Trail\ENG\SHEETS\00\_A\TNT.dwg  
PLOT DATE: 07-18-18 PLOTTED BY: chr

No.	Date	Revisions
	07/18/2018	CONSTRUCTION DOCUMENTS



1646 N. CALIFORNIA BLVD  
SUITE 400  
WALNUT CREEK, CA 94596  
PHONE 925-940-2200  
FAX 925-940-2299

Date	07/18/18	Scale	1" = 20'	Job No.	20145190
Design	CG	Drawn	CC/SC	Approved	DS/ES



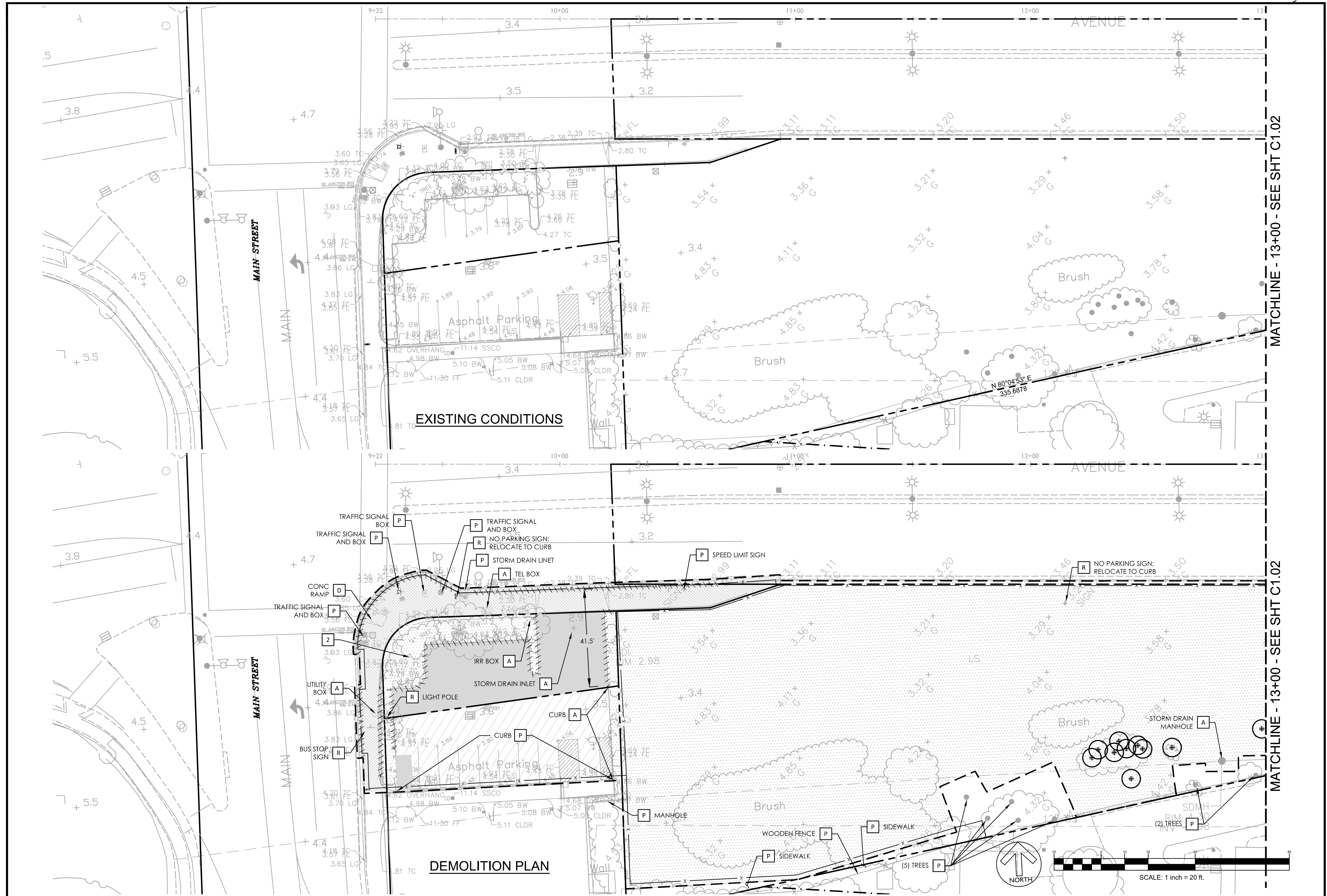
### CROSS ALAMEDA TRAIL MAIN STREET TO CONSTITUTION WAY LINE AND CURVE TABLES

CITY OF ALAMEDA
ALAMEDA COUNTY
CALIFORNIA

Sheet Number:  
**C0.05**



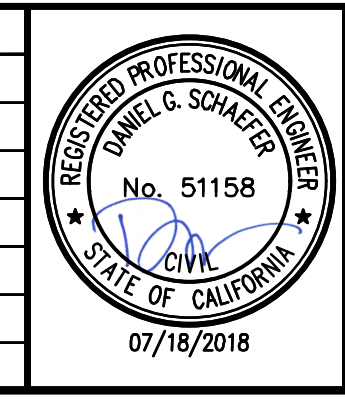
DRAWING NAME: \\BKF-WC\vol4\2014\145190\_Alameda\_Cross\_Alameda\_Trail\ENG\SHEETS\01\_A.TEX.dwg  
 PLOTTED BY: chr  
 PLOT DATE: 07-18-18



MATCHLINE - 13+00 - SEE SHT C1.02

MATCHLINE - 13+00 - SEE SHT C1.02

No.	Date	Revisions
	07/18/2018	CONSTRUCTION DOCUMENTS



**BKF**  
 ENGINEERS | SURVEYORS | PLANNERS

1646 N. CALIFORNIA BLVD  
 SUITE 400  
 WALNUT CREEK, CA 94596  
 PHONE 925-940-2200  
 FAX 925-940-2299

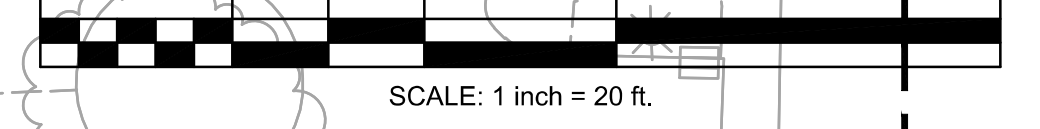
Date 07/18/18 Scale 1" = 20' Job No. 20145190  
 Design CG Drawn CC/SC Approved DS/ES



**CROSS ALAMEDA TRAIL**  
**MAIN STREET TO CONSTITUTION WAY**  
**EXISTING CONDITIONS AND DEMOLITION PLAN**

CITY OF ALAMEDA      ALAMEDA COUNTY      CALIFORNIA

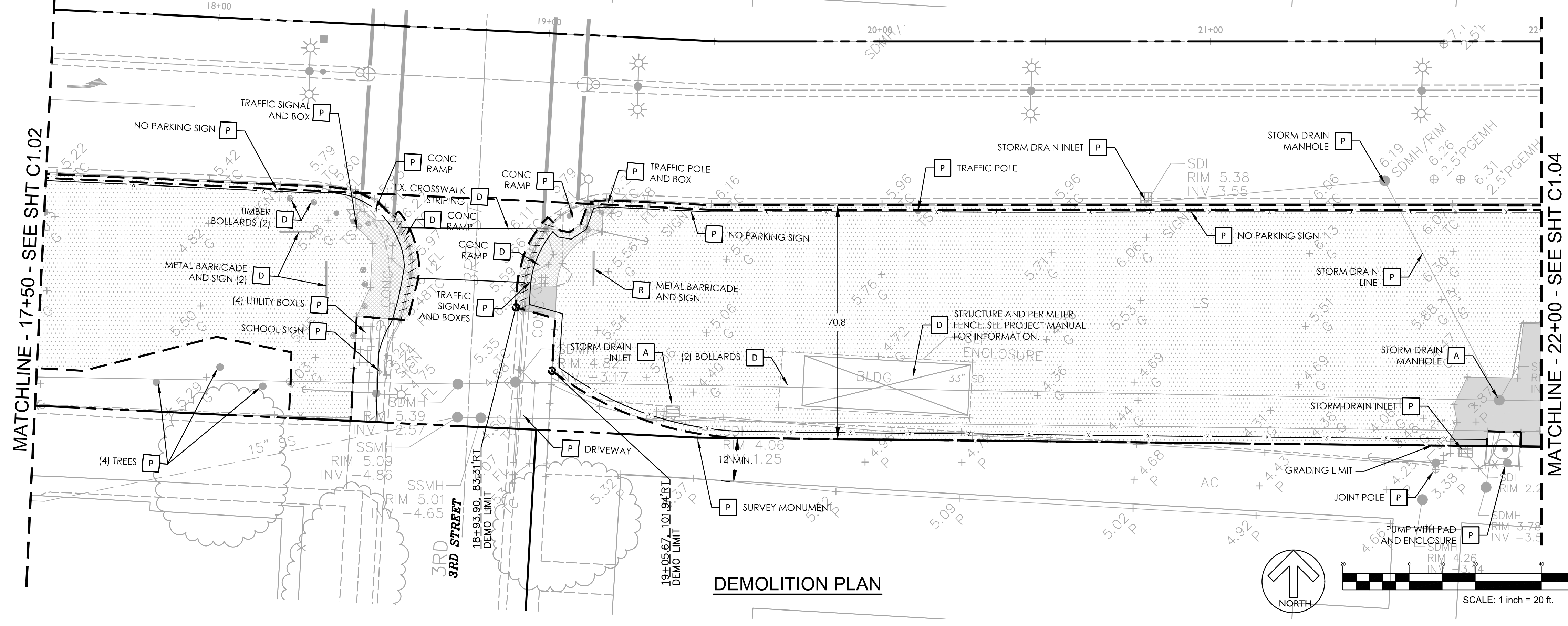
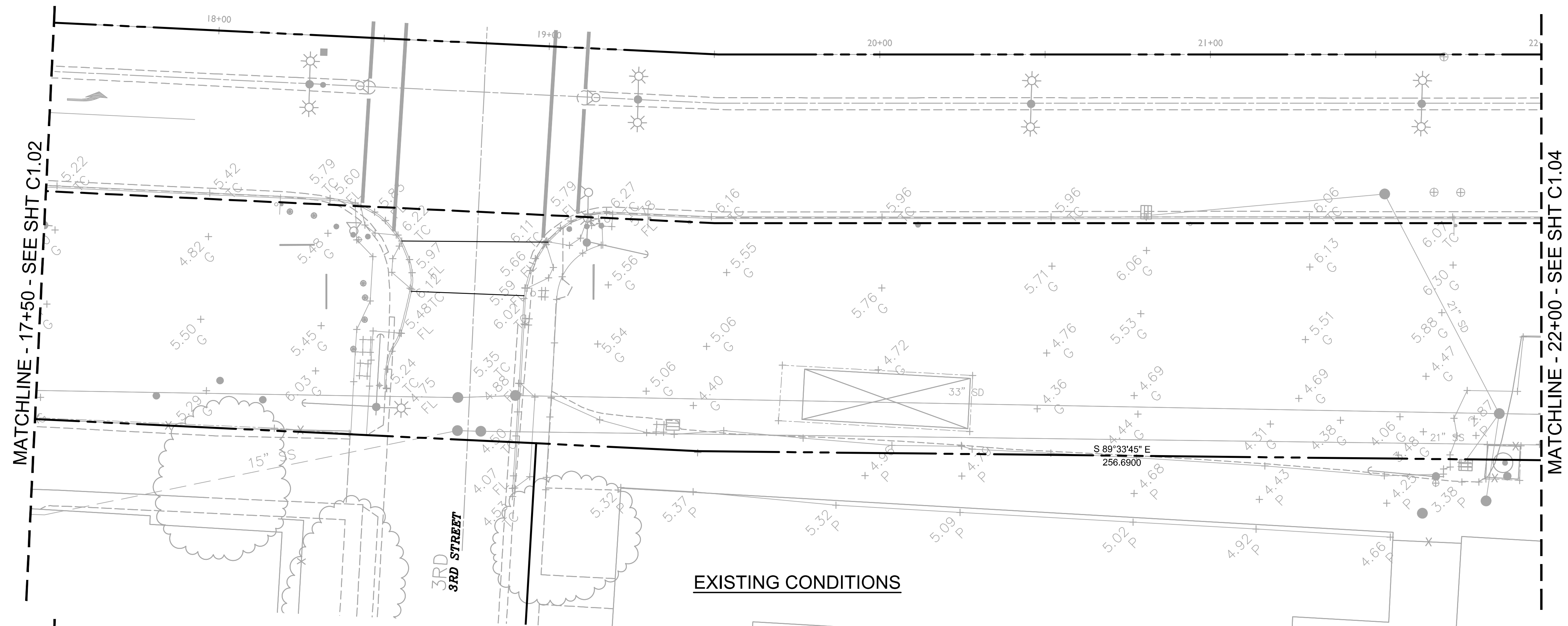
Sheet Number:  
**CI.01**





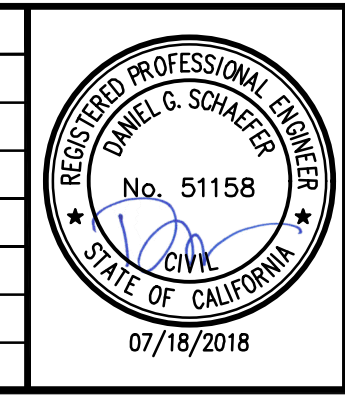






DRAWING NAME: \\BKF-WC\vol4\145190\_Alameda\_Cross\_Alameda\_Trail\ENG\SHEETS\01\_A.TEX.dwg  
 PLOT DATE: 07-18-18  
 PLOTTED BY: chr

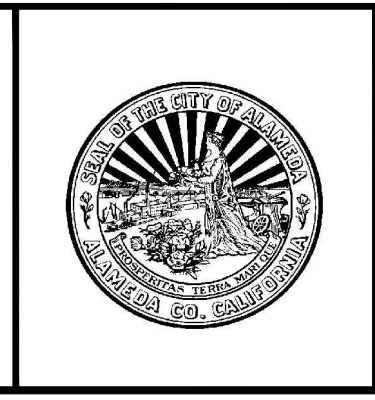
No.	Date	Revisions
	07/18/2018	CONSTRUCTION DOCUMENTS



**BKF**  
 ENGINEERS | SURVEYORS | PLANNERS

1646 N. CALIFORNIA BLVD  
 SUITE 400  
 WALNUT CREEK, CA 94596  
 PHONE 925-940-2200  
 FAX 925-940-2299

Date 07/18/18 Scale 1" = 20' Job No. 20145190  
 Design CG Drawn CC/SC Approved DS/ES



**CROSS ALAMEDA TRAIL**  
**MAIN STREET TO CONSTITUTION WAY**  
**EXISTING CONDITIONS AND DEMOLITION PLAN**

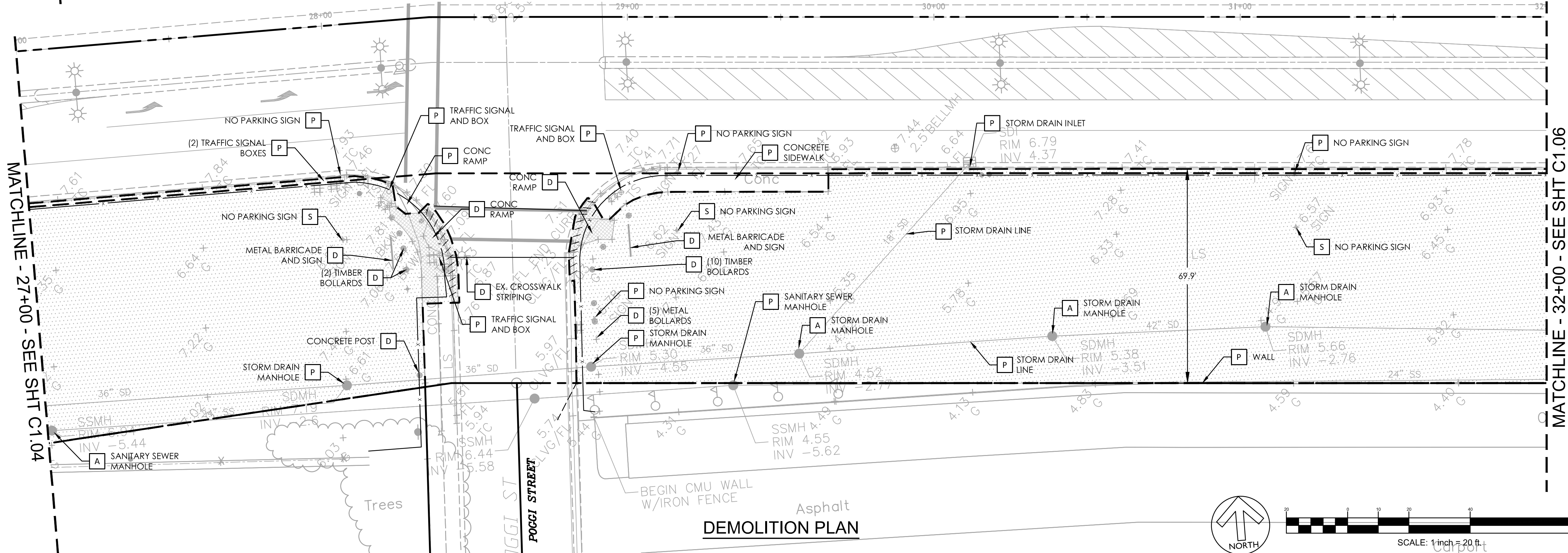
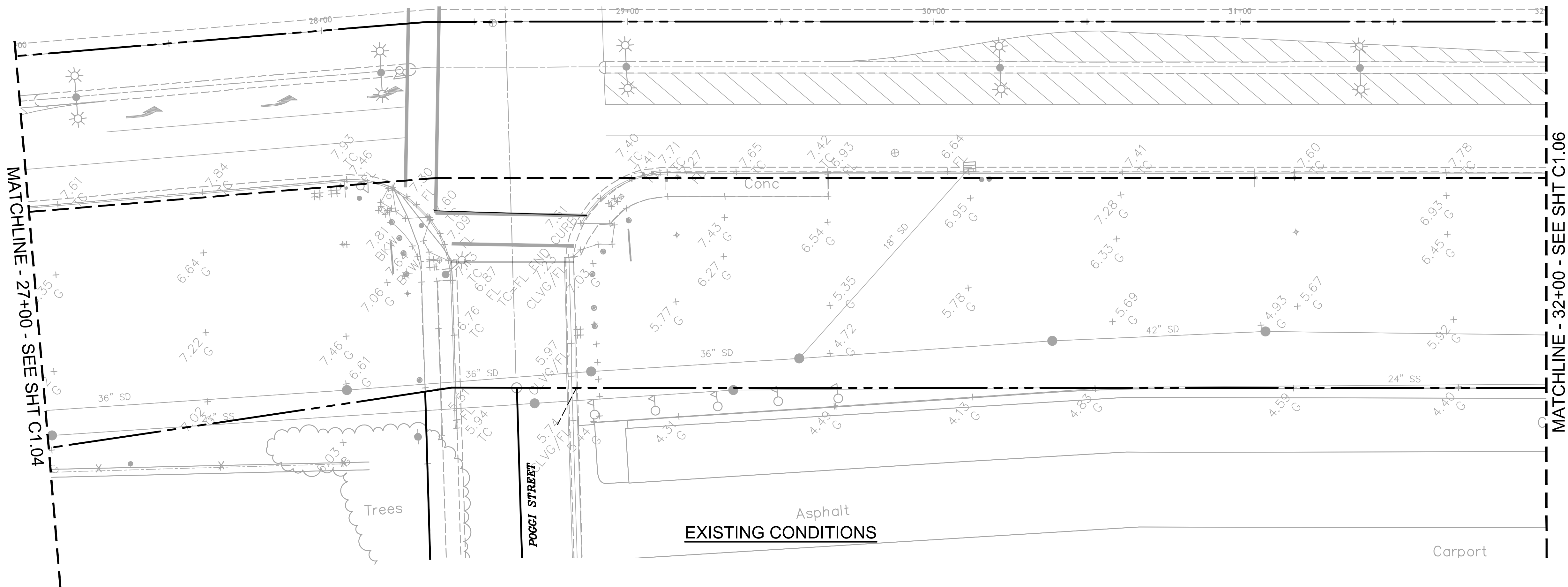
CITY OF ALAMEDA      ALAMEDA COUNTY      CALIFORNIA

Sheet Number:  
**C1.03**

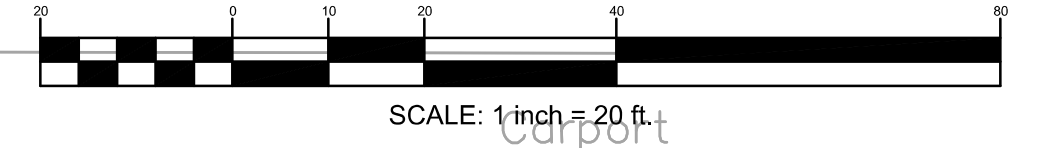
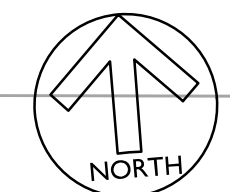






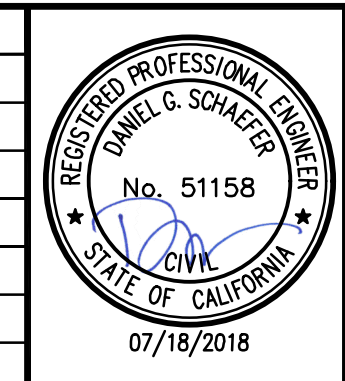


DEMOLITION PLAN



DRAWING NAME: \\BKF-WC\vol4\2014\145190\_Alameda\_Cross\_Alameda\_Trail\ENG\SHEETS\01\_A1.TEX.dwg  
PLOT DATE: 07-18-18 PLOTTED BY: chr

No.	Date	Revisions
	07/18/2018	CONSTRUCTION DOCUMENTS



**BKF**  
ENGINEERS / SURVEYORS / PLANNERS

1646 N. CALIFORNIA BLVD  
SUITE 400  
WALNUT CREEK, CA 94596  
PHONE 925-940-2200  
FAX 925-940-2299

Date 07/18/18 Scale 1" = 20' Job No. 20145190  
Design CG Drawn CC/SC Approved DS/ES



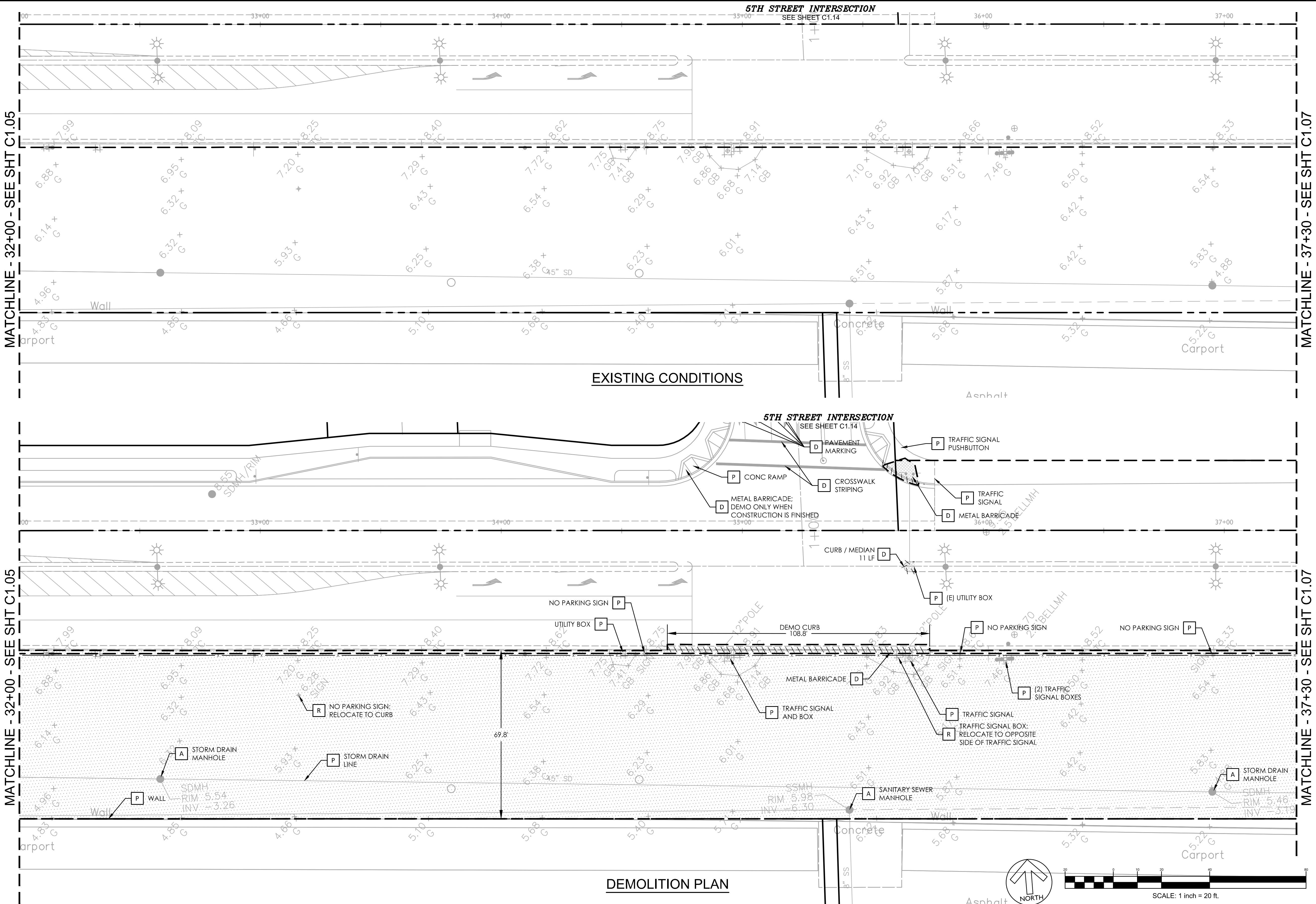
**CROSS ALAMEDA TRAIL  
MAIN STREET TO CONSTITUTION WAY  
EXISTING CONDITIONS AND DEMOLITION PLAN**

CITY OF ALAMEDA      ALAMEDA COUNTY      CALIFORNIA

Sheet Number:  
**C1.05**

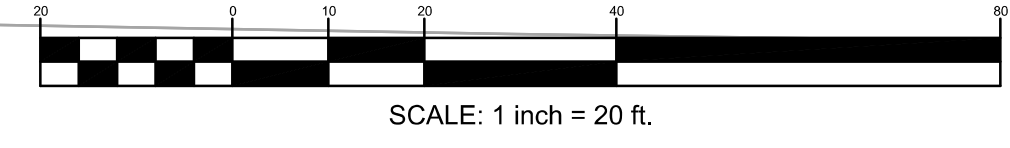
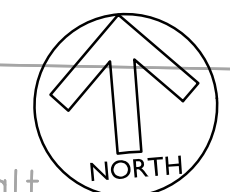


**5TH STREET INTERSECTION**  
SEE SHEET C1.14



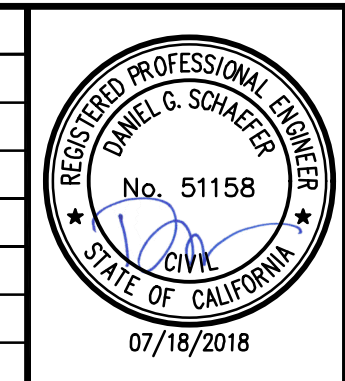
**EXISTING CONDITIONS**

**DEMOLITION PLAN**



DRAWING NAME: \\BKF-WC\vol4\2014\145190\_Alameda\_Cross\_Alameda\_Trail\ENG\SHEETS\01\_A.TEX.dwg  
PLOT DATE: 07-18-18 PLOTTED BY: chr

No.	Date	Revisions
	07/18/2018	CONSTRUCTION DOCUMENTS



**BKF**  
ENGINEERS / SURVEYORS / PLANNERS

1646 N. CALIFORNIA BLVD  
SUITE 400  
WALNUT CREEK, CA 94596  
PHONE 925-940-2200  
FAX 925-940-2299

Date 07/18/18 Scale 1" = 20' Job No. 20145190  
Design CG Drawn CC/SC Approved DS/ES

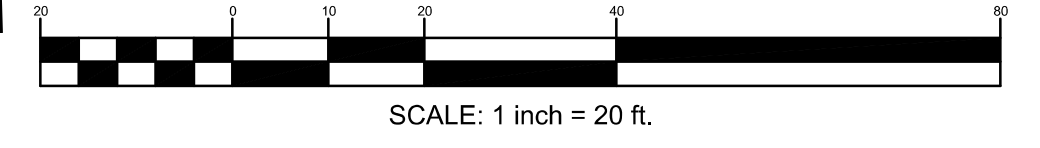
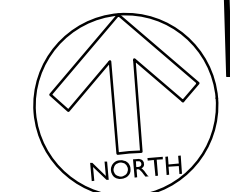
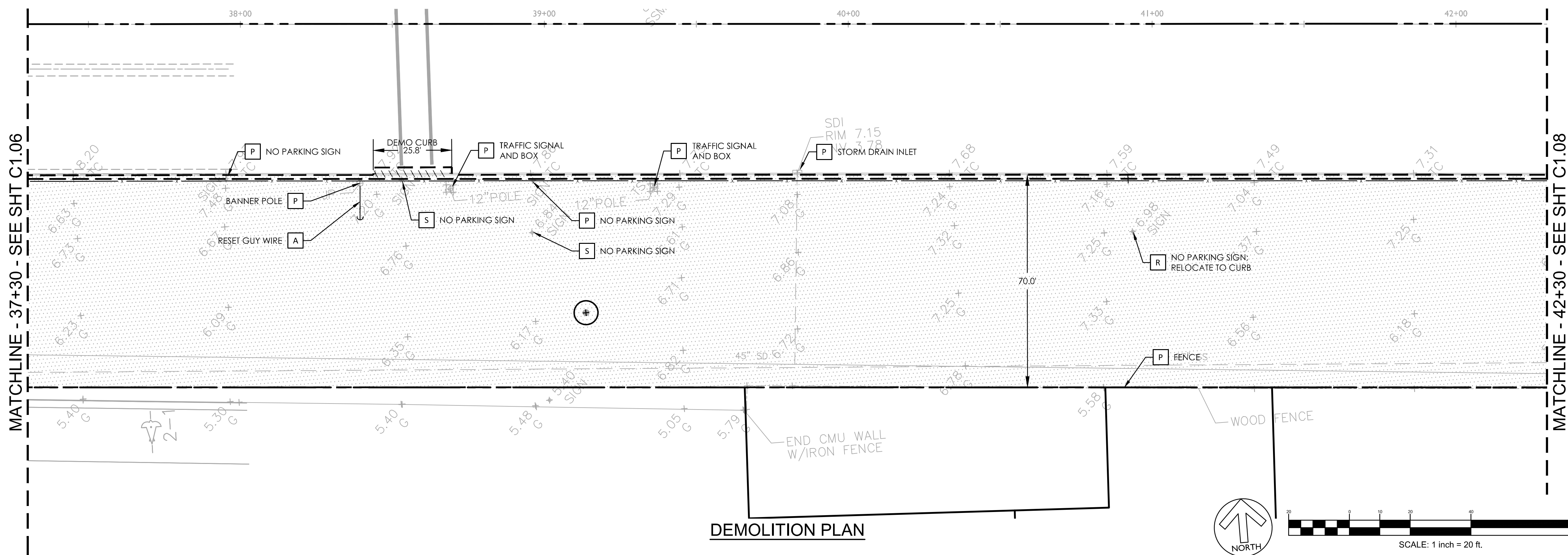
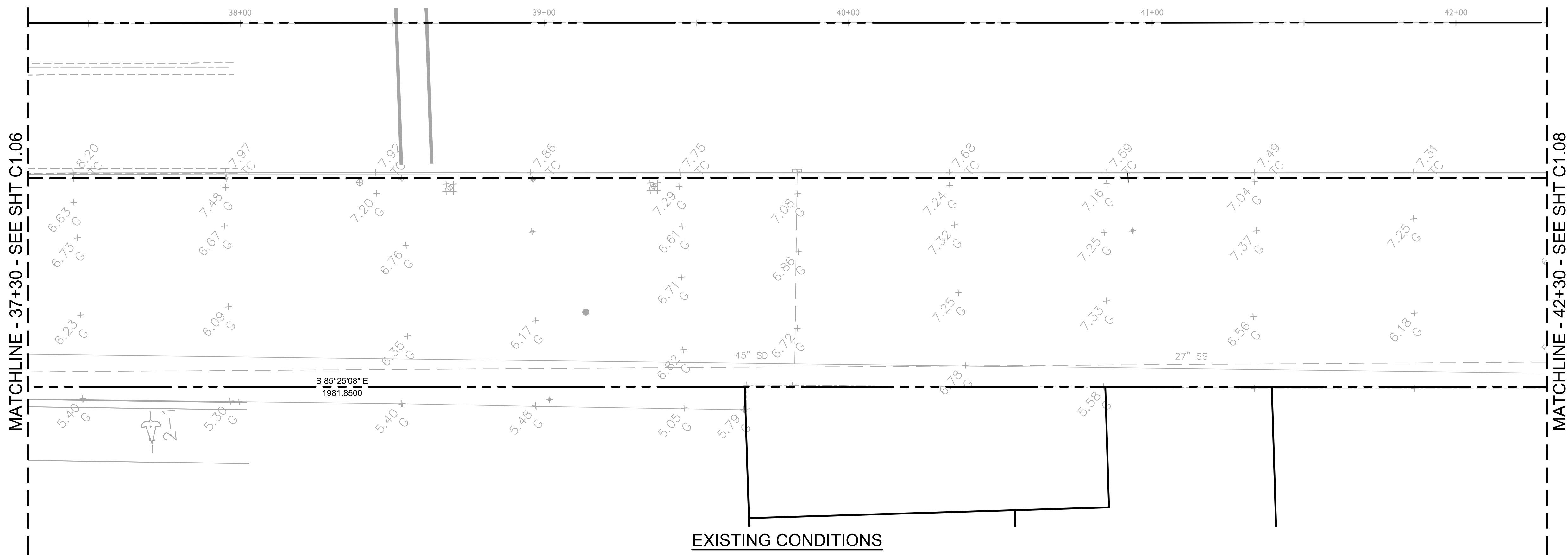


**CROSS ALAMEDA TRAIL  
MAIN STREET TO CONSTITUTION WAY  
EXISTING CONDITIONS AND DEMOLITION PLAN**

CITY OF ALAMEDA      ALAMEDA COUNTY      CALIFORNIA

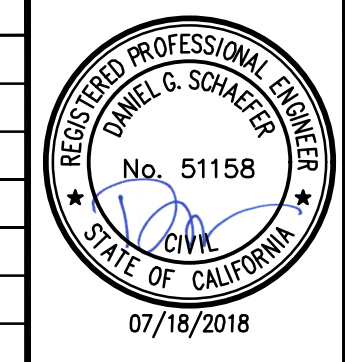
Sheet Number:  
**C1.06**





DRAWING NAME: \\BKF-WC\vol4\2014\145190\_Alameda\_Cross\_Alameda\_Trail\ENG\SHEETS\01\_A.TEX.dwg  
PLOT DATE: 07-18-18  
PLOTTED BY: chr

No.	Date	Revisions
	07/18/2018	CONSTRUCTION DOCUMENTS



**BKF**  
ENGINEERS | SURVEYORS | PLANNERS

1646 N. CALIFORNIA BLVD  
SUITE 400  
WALNUT CREEK, CA 94596  
PHONE 925-940-2200  
FAX 925-940-2299

Date 07/18/18 Scale 1" = 20' Job No. 20145190  
Design CG Drawn CC/SC Approved DS/ES



**CROSS ALAMEDA TRAIL  
MAIN STREET TO CONSTITUTION WAY  
EXISTING CONDITIONS AND DEMOLITION PLAN**

CITY OF ALAMEDA      ALAMEDA COUNTY      CALIFORNIA

Sheet Number:  
**C1.07**



MATCHLINE - 42+30 - SEE SHT C1.07

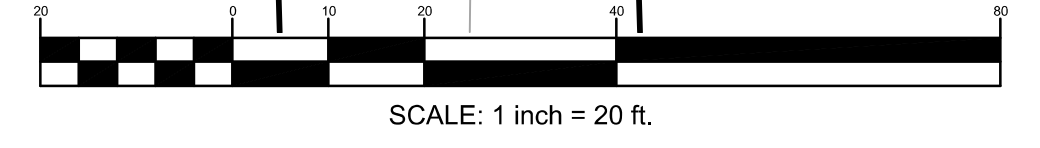
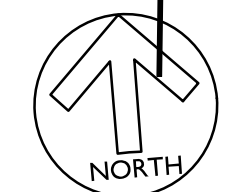
MATCHLINE - 47+30 - SEE SHT C1.09

EXISTING CONDITIONS

MATCHLINE - 42+30 - SEE SHT C1.07

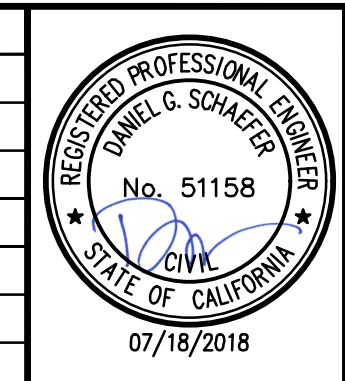
MATCHLINE - 47+30 - SEE SHT C1.09

DEMOLITION PLAN



DRAWING NAME: \\BKF-WC\vol4\2014\145190\_Alameda\_Cross\_Alameda\_Trail\ENG\SHEETS\01\_A.TEX.dwg  
 PLOT DATE: 07-18-18  
 PLOTTED BY: chr

No.	Date	Revisions
	07/18/2018	CONSTRUCTION DOCUMENTS



**BKF**  
 ENGINEERS / SURVEYORS / PLANNERS

1646 N. CALIFORNIA BLVD  
 SUITE 400  
 WALNUT CREEK, CA 94596  
 PHONE 925-940-2200  
 FAX 925-940-2299

Date 07/18/18 Scale 1" = 20' Job No. 20145190  
 Design CG Drawn CC/SC Approved DS/ES

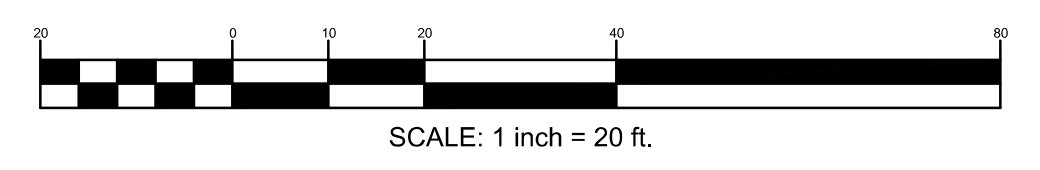
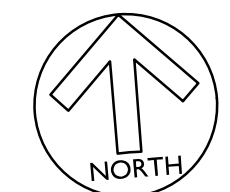
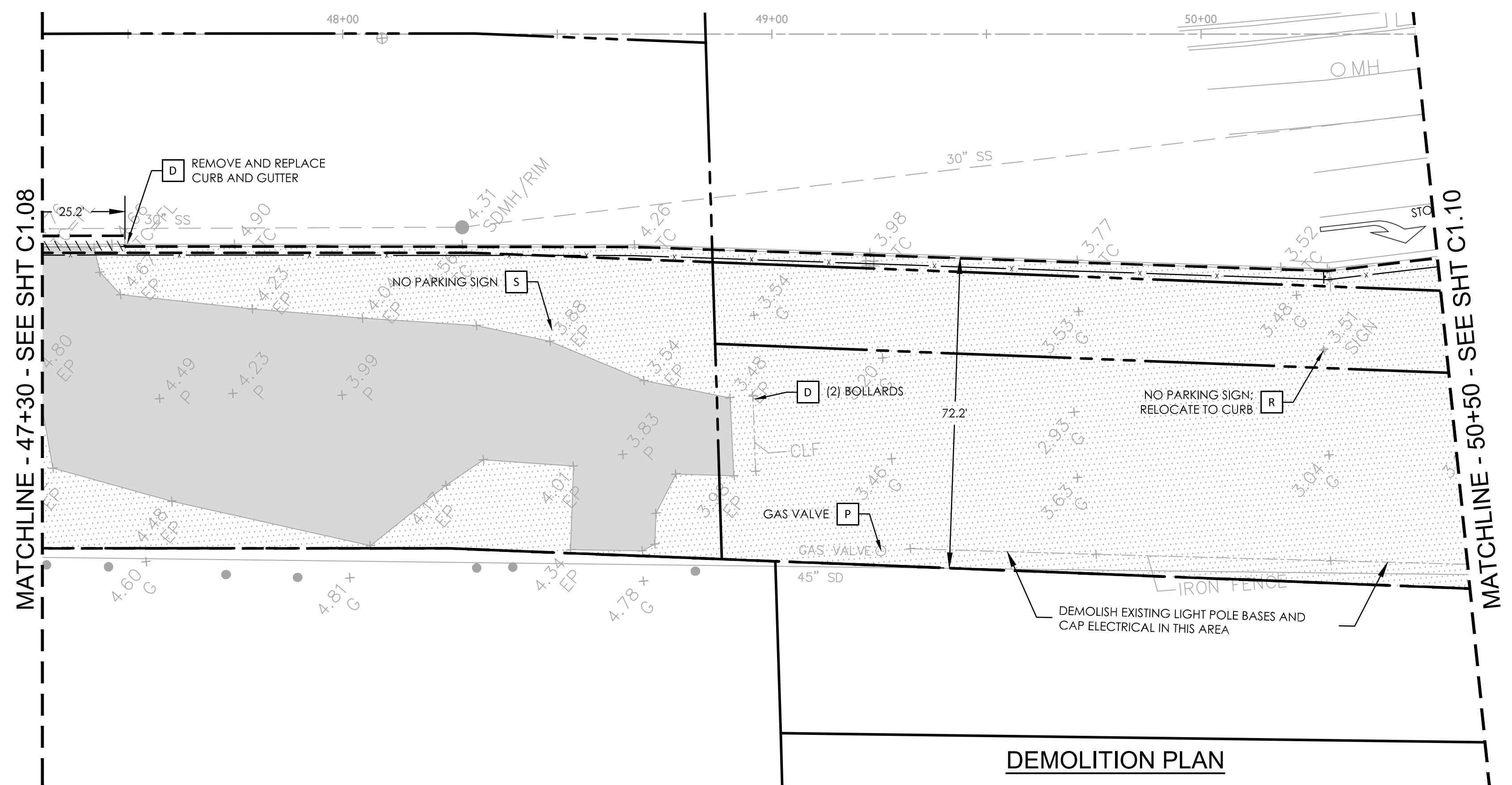
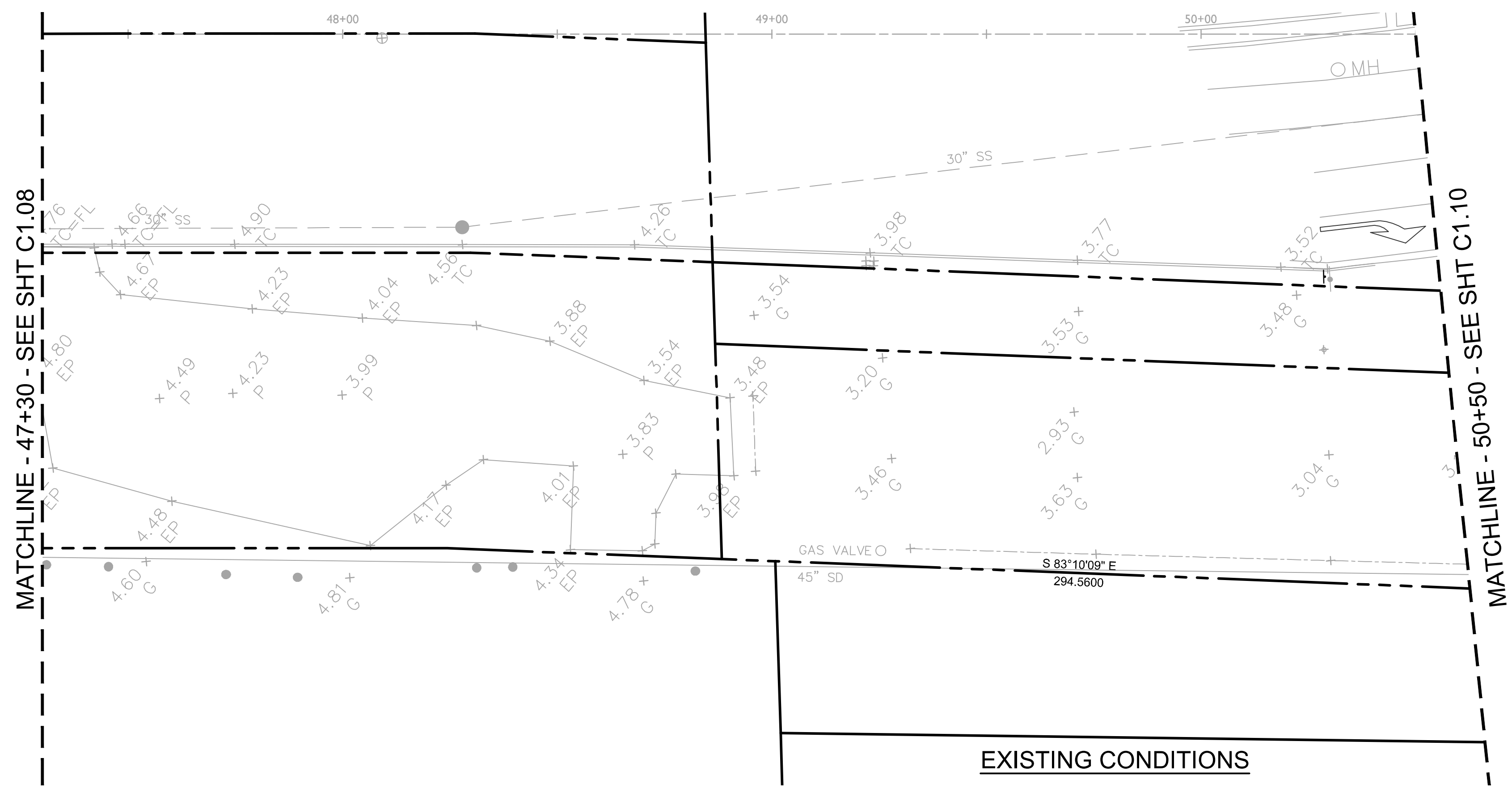


**CROSS ALAMEDA TRAIL**  
**MAIN STREET TO CONSTITUTION WAY**  
**EXISTING CONDITIONS AND DEMOLITION PLAN**

CITY OF ALAMEDA      ALAMEDA COUNTY      CALIFORNIA

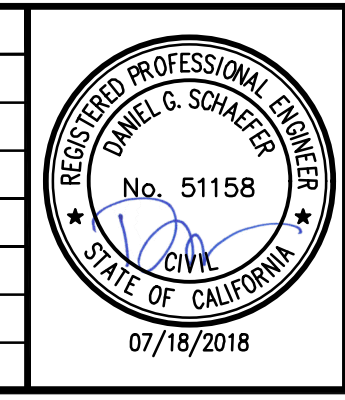
Sheet Number:  
**C1.08**





DRAWING NAME: \\BKF-WC\vol4\2014\145190\_Alameda\_Cross\_Alameda\_Trail\ENG\SHEETS\01\_A.TEX.dwg  
 PLOTTED BY: chr  
 PLOT DATE: 07-18-18

No.	Date	Revisions
	07/18/2018	CONSTRUCTION DOCUMENTS



**BKF**  
ENGINEERS | SURVEYORS | PLANNERS

1646 N. CALIFORNIA BLVD  
SUITE 400  
WALNUT CREEK, CA 94596  
PHONE 925-940-2200  
FAX 925-940-2299

Date 07/18/18 Scale 1" = 20' Job No. 20145190  
Design CG Drawn CC/SC Approved DS/ES



**CROSS ALAMEDA TRAIL**  
**MAIN STREET TO CONSTITUTION WAY**  
**EXISTING CONDITIONS AND DEMOLITION PLAN**

CITY OF ALAMEDA      ALAMEDA COUNTY      CALIFORNIA

Sheet Number:  
**CI.09**