



City of Alameda, California

April 6, 2017

TO: PROSPECTIVE BIDDERS

CROSS ALAMEDA TRAIL JEAN SWEENEY IMPROVEMENTS

ALONG ATLANTIC AVENUE BETWEEN
WEBSTER STREET AND SHERMAN STREET

FEDERAL-AID PROJECT NUMBER ATPL-5014(042)

PROJECT NUMBER P.W. 05-16-11

ADDENDUM NO. 03

All Addenda – including this and Addendum No. 03 - reside on BPXpress' (Richmond) 'Current Projects Out To Bid' website portal. See BPXpress, Central Avenue, Richmond, CA website; "http://www.blueprintexpress.com", Online Planroom, "Find Jobs to Bid", City of Alameda; Cross Alameda Trail, "View project details".

Addendum No. 03, with attachments, is hereby issued in response to the following Bidders' Requests for Information and/or Questions:

1) Bidder asks to consider requiring Exhibits 15-G and 15-H, and the "Bidder's List of Subcontractors (DBE & Non-DBE) Parts I (Selected) and II (Rejected)", to be submitted within 4 business days after the bid by the lowest three responsive bidders.

(Public Works/ARPD): EXHIBIT 15-G must be submitted by all bidders. Exhibit 15-H however, and both Parts I and II of "Bidder's List of Subcontractors (DBE & Non-DBE)" can be submitted post-bid, no later than 5:00 pm, Monday, April 24th – by the lowest three responsive bidders.

2) Per Bid form - Bid Item 40 Trees-24" Box (15 Gallon); Please confirm that they're to be 24" boxes and the 15 Gallon should be deleted.

(Placeworks): Yes, they should all be 24" boxes, please ignore the 15 gallon notation.

3) Per item 10.60 Bike Repair Station, SECTION 10 – SPECIAL PROVISIONS; " ... shall be provided by the City Install per details, manufacturer's installation instructions". Please provide manufacturer and model #.

(Placeworks): Manufacturer is "Dero Fixit", (Galvanized, Air Kit 2 added pump); DERO BIKE RACK CO., 504 Malcolm Avenue SE, Suite 100, Minneapolis, MN 55414, 1-888-337-6729. Fax: 612-331-2731, website: www.dero.com.

4) Per item 10.55 Benches (both concrete and metal), SECTION 10 – SPECIAL PROVISIONS; "Benches shall be provided by the City and assembled and installed by Contractor". Please provide assembly instructions and weights.

(Placeworks): See below for both concrete and metal benches.

a) For CONCRETE BENCH: MFR.: OUTDOOR CREATIONS, INC., MODEL 408, Concrete with Kahlua color and graffiti resistant finish. Concrete bench (2,000 lbs.) is one piece, no assembly required.

b) For METAL BENCH: MFR.: DUMOR, MODEL: Bench 142-60PL, IPE WOOD, with green metal, Surface Mounted, wt.; 211 lbs, assembly required (instructions attached).



City of Alameda, California

5) Per item 10.58 Trash/Recycling, SECTION 10 – SPECIAL PROVISIONS; “Trash/recycling receptacles shall be provided by the City and assembled and installed by Contractor”. Please provide assembly instructions and weights.

(Placeworks): TRASH/RECYCLING: MFR.: OUTDOOR CREATIONS, INC., MODEL 511, concrete with Kahlua color and graffiti resistant finish, with powder coated steel side opening doors and Recycle Blue and Trash Black powder coated doors, with Recycle Logos and Arrows on Blue door. 2,000 lb. concrete receptacle is one piece, no assembly required.

6) Detail 4/L-18, Wooden Header says “SEE SPECS”, specifications say “see plans”. Please confirm size and type of wood header.

(Placeworks): Wood Header; Dimensions: 2”X6”, lumber shall be recycled or FSC certified construction heart redwood.

7) **(Placeworks):** See below for revised SPECIAL PROVISIONS specification section 10.44, Hydoseeding as follows:

10.44 HYDROSEEDING

Compost shall be spread over all areas to be hydroseed prior to seeding. The compost shall comply with requirements as noted in LANDSCAPE SOIL PREPARATION, and shall be spread to a uniform thickness of ~~one inch (1")~~ **4CY/1000sf** over all areas to be hydroseeded. Add seed to hydro mulch prior to application. Seed may be dry applied to small areas not accessible by hydroseeding equipment if authorized. Add water to hydroseed materials as recommended by the manufacturer and mix sufficiently to ensure an even application. A dispersing agent may be added to the mixture if authorized.

This Addendum No. 03, in its entirety, is hereby incorporated into the Bidding Documents.

APPROVED: Jack Dybas Date: April 6, 2017



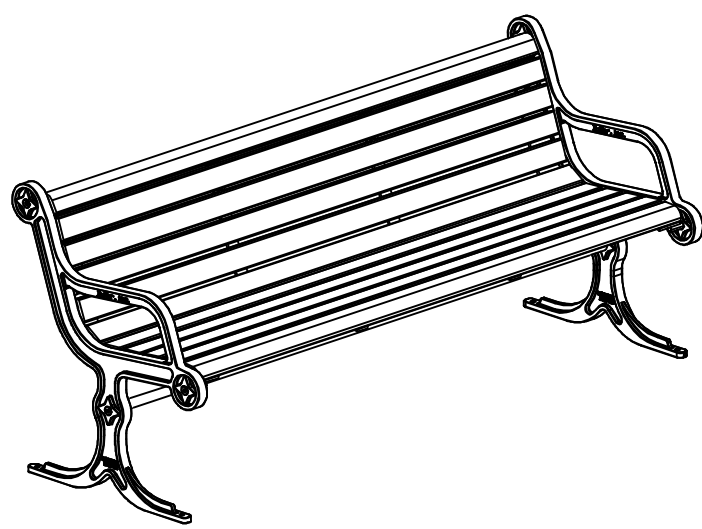
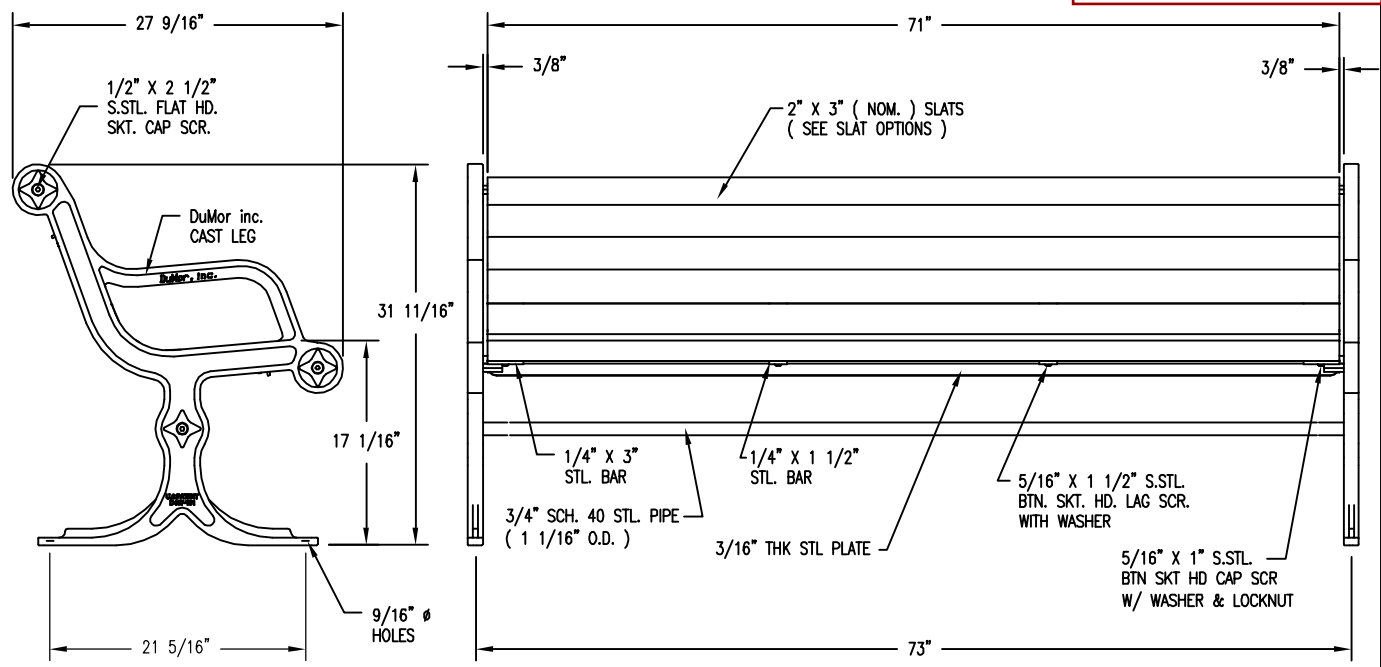
Jack Dybas, Project Manager II
City of Alameda / Public Works
950 West Mall Square / Alameda, CA 94501
(510) 747-7948 / jdybas@alamedaca.gov

Receipt is hereby acknowledged of **Addendum No. 03, Cross Alameda Trail**, No. P.W. 05-16-11

Company Name / Contractor Date: _____

By: _____

NOTE: THIS COMPLETE ADDENDUM, SIGNED AND DATED, MUST BE RETURNED WITH YOUR BID.



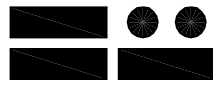
CUSTOM LETTERING (37 SPACES) _____

NOTES

- 1.) ALL STL. MEMBERS COATED W/ ZINC RICH EPOXY THEN FINISHED W/ POLYESTER POWDER COATING.
- 2.) 1/2" X 3 3/4" EXPANSION ANCHOR BOLTS PROVIDED.
- 3.) CUSTOM LETTERING AVAILABLE FOR RECESSED SIDE PANELS (TOTAL OF 37 SPACES).

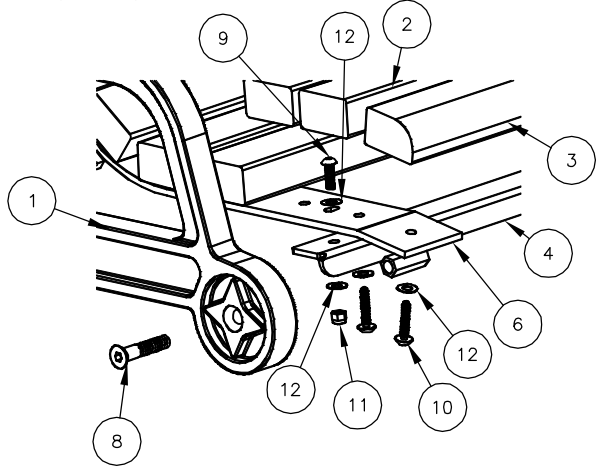
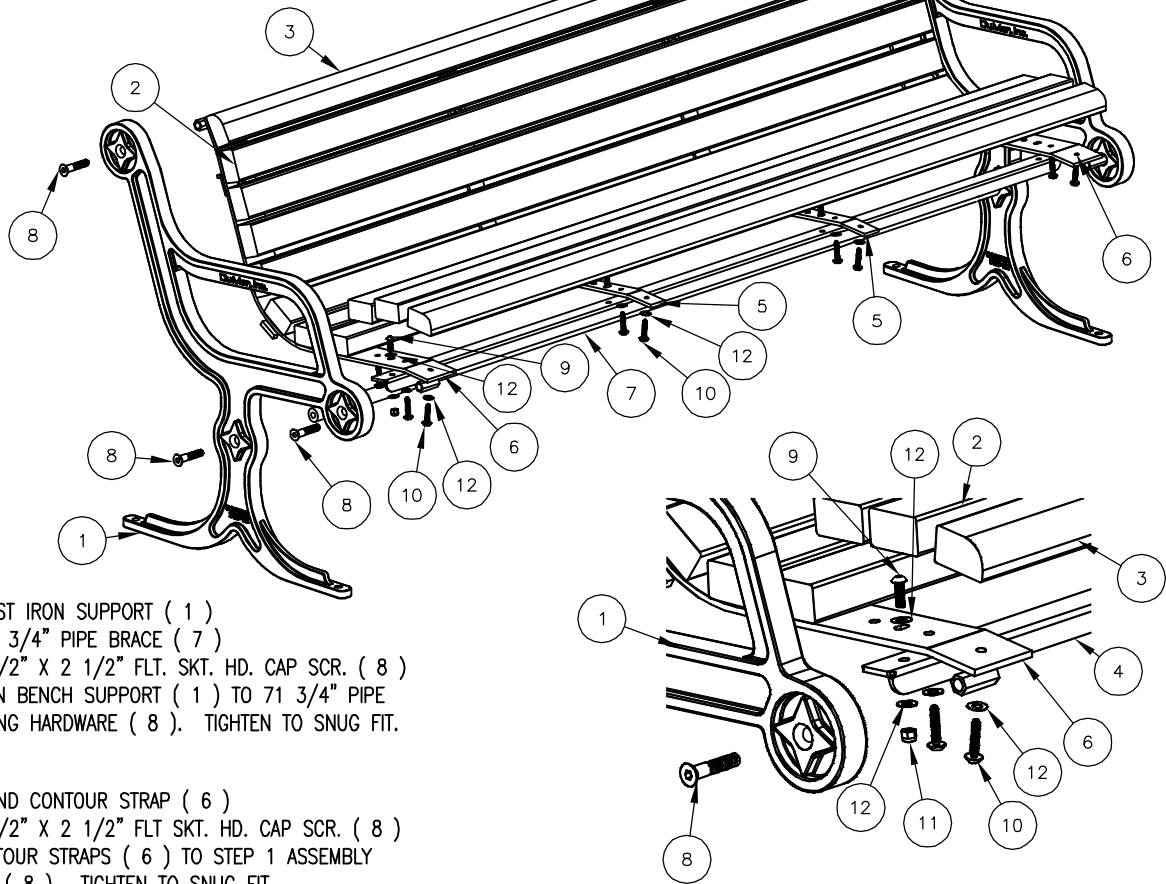
SLAT OPTIONS

- "CEDAR" RECYCLED PLASTIC
- "GREY" RECYCLED PLASTIC
- "REDWOOD" RECYCLED PLASTIC
- "WALNUT" RECYCLED PLASTIC
- OTHER _____

 DuMor, inc. P.O. Box 142 Mifflintown, PA 17059-0142	SCALE :	NONE	TITLE :		BENCH	
	DATE DRAWN :	7/10/01			PATENT D467-101	
	DRAWN BY :	AH	REV.	DRAWING NUMBER		
	DATE REV. :	10/26/11	E	143-60PL	SHEET	
	REV. BY :	RDH			1 OF 2	

NOTE:

- 1.) DURING ASSEMBLY PROCEDURE;
DO NOT COMPLETELY TIGHTEN HARDWARE.
- 2.) THE ACTUAL PARTS WILL NOT BE NUMBERED.
NUMBERS ONLY APPLY TO DRAWING.



DETAIL A

STEP 1:

- USE 2 - PC. CAST IRON SUPPORT (1)
 1 - PC. 71 3/4" PIPE BRACE (7)
 2 - PCS. 1/2" X 2 1/2" FLT. SKT. HD. CAP SCR. (8)
 ATTACH CAST IRON BENCH SUPPORT (1) TO 71 3/4" PIPE BRACE (7) USING HARDWARE (8). TIGHTEN TO SNUG FIT.

STEP 2:

- USE 2 - PCS. END CONTOUR STRAP (6)
 4 - PCS. 1/2" X 2 1/2" FLT SKT. HD. CAP SCR. (8)
 ATTACH END CONTOUR STRAPS (6) TO STEP 1 ASSEMBLY USING HARDWARE (8). TIGHTEN TO SNUG FIT.

STEP 3:

- USE 2 - PCS. 71" SEAT BRACE (4)
 4 - PCS. 5/16" X 1" SS. BTN SKT HD CAP SCR (9)
 4 - PCS. 5/16" SS. NYLON LOCKNUT (11)
 8 - PCS. 5/16" SS. FLAT WASHER (12)
 ATTACH 71" SEAT BRACE (4) TO STEP 2 ASSEMBLY USING HARDWARE (9, 11 & 12). TIGHTEN TO SNUG FIT.

STEP 4:

- USE 2 - PCS. CENTER CONTOUR STRAP (5)
 4 - PCS. 5/16" X 1" SS. BTN SKT HD CAP SCR (9)
 4 - PCS. 5/16" SS. NYLON LOCKNUT (11)
 8 - PCS. 5/16" SS. FLAT WASHER (12)
 ATTACH CENTER CONTOUR STRAP (5) TO STEP 3 ASSEMBLY USING HARDWARE (9, 11 & 12). TIGHTEN TO SNUG FIT.

STEP 5:

- USE 9 - PCS. 2" X 3" X 71" PLASTIC INT'R SLAT (2)
 2 - PCS. 2" X 3" X 71" PLASTIC EDGE SLAT (3)
 44 - PCS. 5/16" X 1 1/2" SS. BTN. SKT. HD. LAG (10)
 44 - PCS. 5/16" SS. FLAT WASHER (12)
 ATTACH 2" X 3" X 71" PLASTIC SLATS (2 & 3) TO STEP 4 ASSEMBLY USING HARDWARE (10 & 12). TIGHTEN TO SNUG FIT.
 REPEAT UNTIL ALL SLATS ARE ATTACHED.

STEP 6:

UPON COMPLETION OF BENCH ASSEMBLY SQUARE ALL COMPONENTS THEN TIGHTEN ALL HARDWARE.

STEP 7:

MOUNT AND ANCHOR AS SPECIFIED.

ITEM	QTY	PART NO	DESCRIPTION
1	2	0-140-00-01	CAST IRON BENCH SUPPORT
2	9	0-143-60PL-01	2" X 3" X 71" PLASTIC INT'R SLAT
3	2	0-143-60PL-02	2" X 3" X 71" PLASTIC EDGE SLATS
4	2	0-16-60-06	71" SEAT TUBE BRACE
5	2	0-57-00-03	CENTER CONTOUR STRAP
6	2	0-57-00-05	END CONTOUR STRAP
7	1	0-57-60-04	71 3/4" PIPE BRACE
8	6	1-12-065	1/2" X 2 1/2" FLT SKT HD CAP SCR
9	8	1-12-116	5/16" X 1" SS BTN SKT HD CAP SCR
10	44	1-13-023	5/16" X 1 1/2" SS BTN SKT HD LAG
11	8	1-20-016	5/16" SS NYLON LOCKNUT
12	60	1-22-017	5/16" SS FLAT WASHER

DuMor, inc.
 P.O. Box 142 Mifflintown, PA 17059-0142

SCALE : NONE
 DATE DRAWN : 7/10/01
 DRAWN BY : AWH
 DATE REV. : 10/26/11
 REV. BY : RDH

TITLE : BENCH ASSEMBLY
 PATENT D467-101

REV. E
 DRAWING NUMBER 143-60PL
 SHEET 2 OF 2