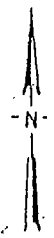
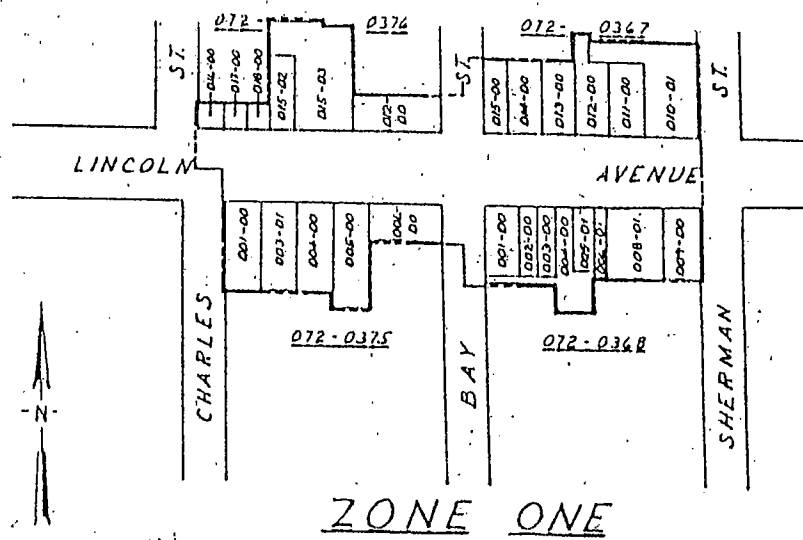
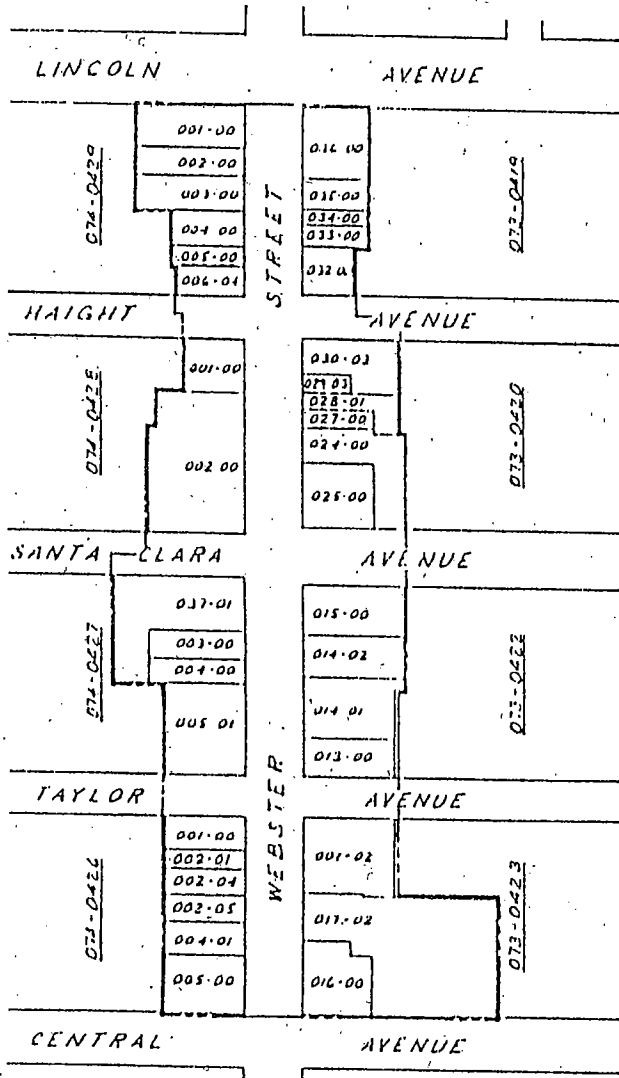


ZONE TWO



SPECIFICATIONS

ZONE NO.	LIMIT OF WORK	DESCRIPTION OF WORK
1	LINCOLN (ST CHARLES TO SHERMAN)	TREE MAINTENANCE MEDIAN MAINTENANCE REFUSE CONTAINER MAINTENANCE
2	WEBSTER (CENTRAL TO LINCOLN)	TREE MAINTENANCE REFUSE CONTAINER MAINTENANCE
3	WEBSTER (LINCOLN TO ATLANTIC)	TREE MAINTENANCE REFUSE CONTAINER MAINTENANCE
4	11th ST. (SAN JOSE TO ESTURAN) LINCOLN (OAK TO EVERETT) SANTA CLARA (OAK TO MADADWAY) CENTRAL (OAK TO EVERETT)	TREE MAINTENANCE REFUSE CONTAINER MAINTENANCE

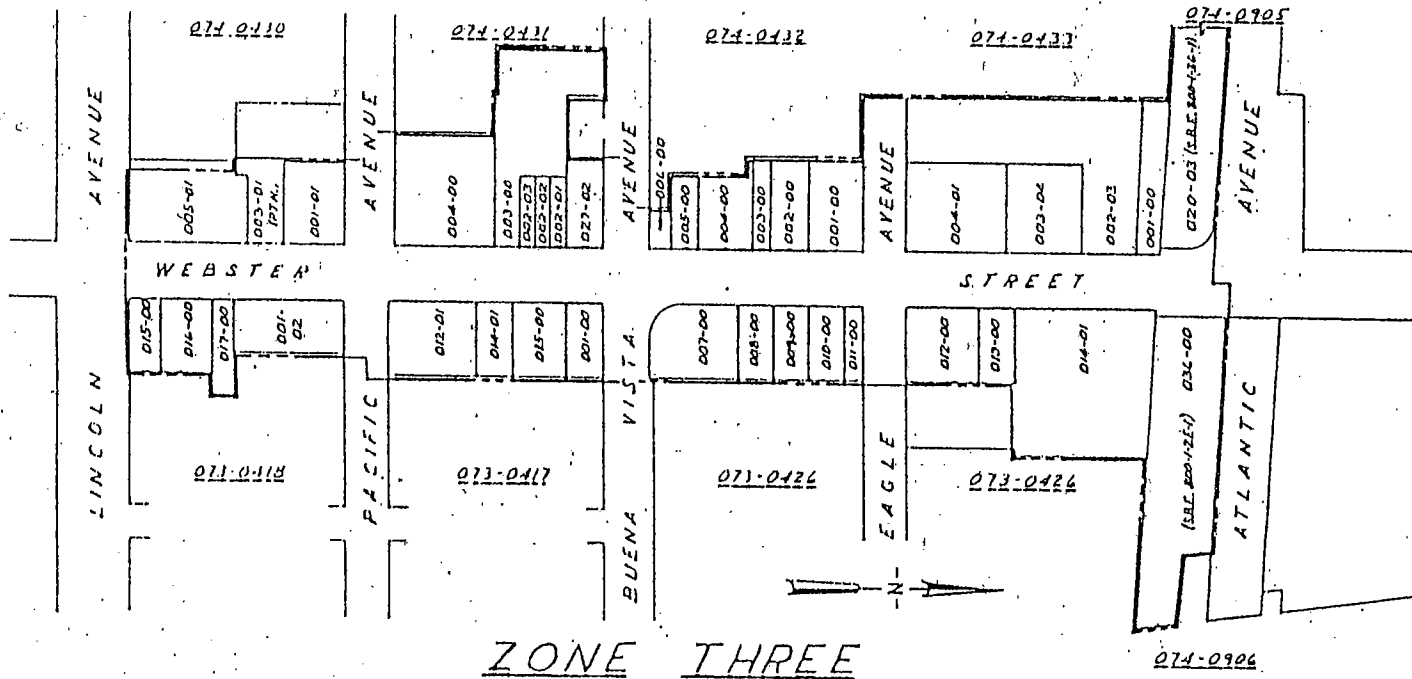
LEGEND

- 072-076 INDICATES ASSESSOR'S BOOK / PAGE NO.
- 015-01 INDICATES ASSESSOR'S PARCEL NO.
- INDICATES DISTRICT / ZONE BOUNDARY

FOR A DETAILED DESCRIPTION OF THE LINES AND DIMENSIONS OF ANY LOTS OR PARCELS SHOWN HEREON, REFER TO THE ASSESSOR'S MAPS OF ALAMEDA COUNTY.



BENCH MARK		REFERENCES		CITY OF ALAMEDA PUBLIC WORKS ENGINEERING DEPARTMENT DIAGRAM OF ISLAND CITY LANDSCAPING & LIGHTING DISTRICT	
PREPARED BY: _____ CHECKED BY: _____ DATE: _____		PROJECT NO.: _____ SHEET NO.: _____ SCALE: 1" = 100'		APPROVED BY: _____ DATE: 5/23/95 8894 51	



ZONE THREE

Filed in the office of the City Clerk of the City of Alameda, California, this ___ day of ___ 198__.

Diane Felsch, City Clerk

An assessment was levied by the City Council of the City of Alameda, California, on lots, pieces and parcels of land shown on this diagram on the ___ day of ___ 198__, by its Resolution No. _____.

Diane Felsch, City Clerk

Filed in the office of the County Auditor of the County of Alameda, State of California, this ___ day of ___ 198__.

Donald M. Parkin, Auditor of the County of Alameda, California



BENCHMARK	REFERENCES	DATE		CITY OF ALAMEDA ENGINEERING DEPARTMENT DIAGRAM OF ISLAND CITY LANDSCAPING & LIGHTING DISTRICT 84-2
		NO.	BY	
		REVISION	DATE	
		SCALE	DATE	

PREPARED BY
Joseph J. Anderson
 DRAWN BY
 5/23/85
 DATE
 1985

8694 51