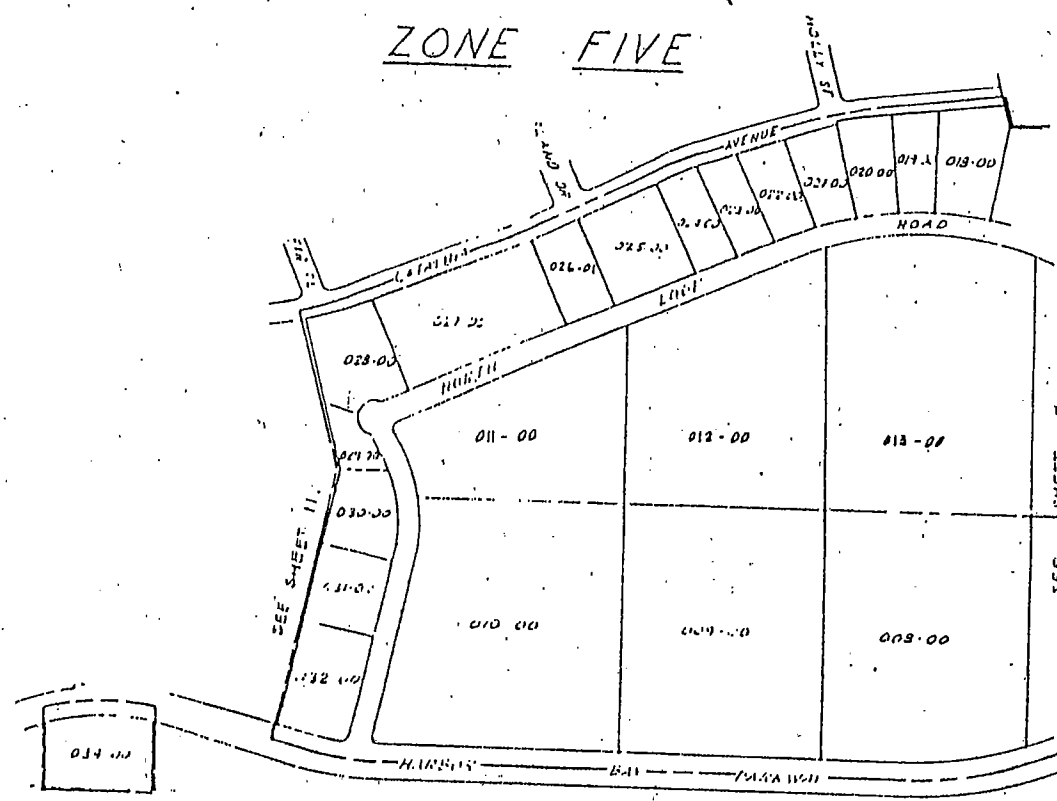


ZONE FIVE




074-1337

REVISION	DATE	BY	DESCRIPTION

CITY OF ALAMEDA
CALIFORNIA
ENGINEERING DEPARTMENT

**DIAGRAM OF
ISLAND CITY LANDSCAPING
& LIGHTING DISTRICT 84-2**



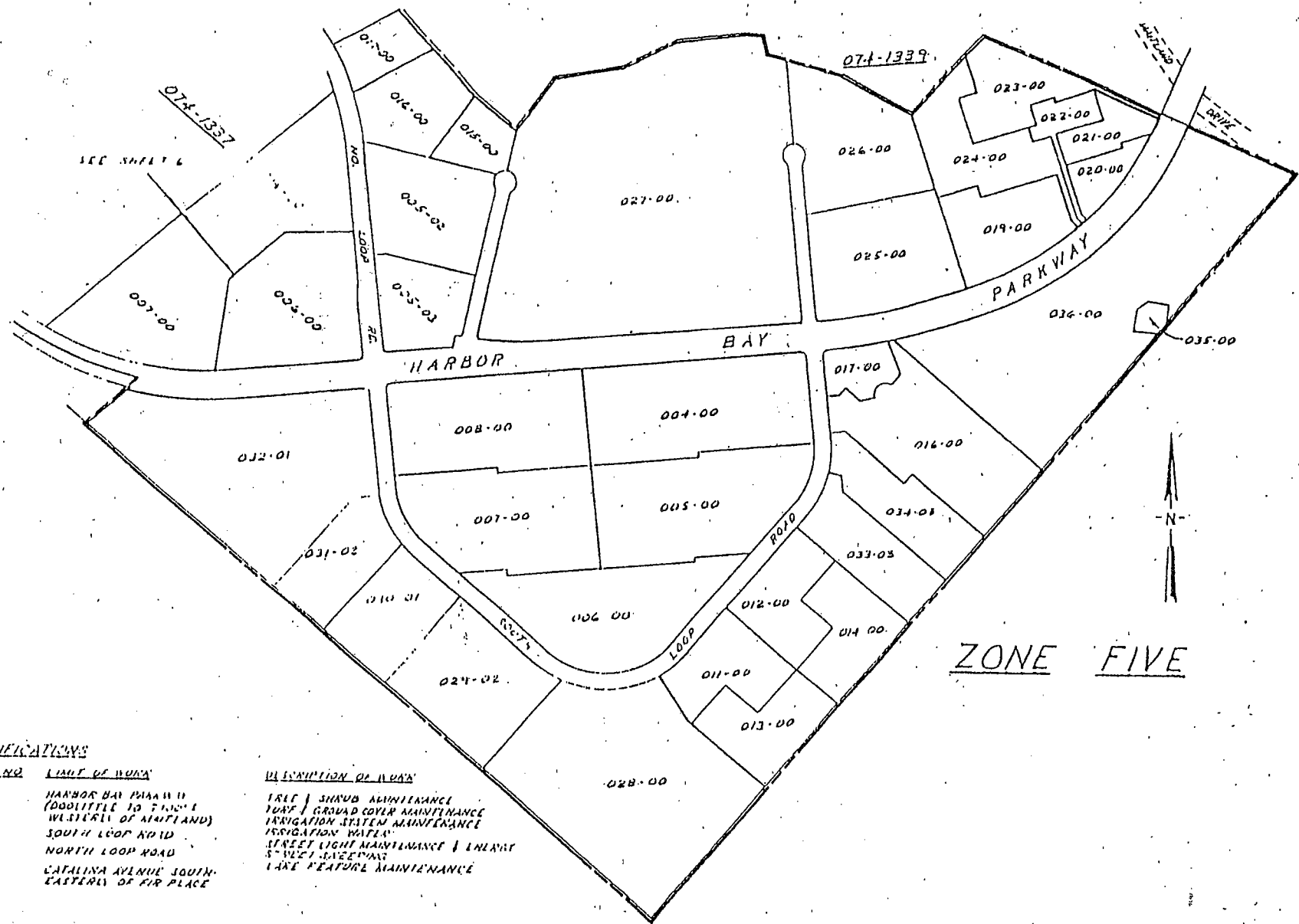
REGISTERED PROFESSIONAL ENGINEER
STATE OF CALIFORNIA
No. 12345
Exp. 12/31/95

Prepared by: *Joseph A. [Signature]*

Date: *5/23/95*

Scale: *1" = 300'*

8884 51



ZONE FIVE


EXPLANATIONS

5
 HARBOR BAY PLANNING
 (DODDLETT TO FINCH)
 WESTERN OF MOUNTAIN
 SOUTH LOOP ROAD
 NORTH LOOP ROAD
 CATALINA AVENUE SOUTH
 EASTERN OF FIRE PLACE

DESCRIPTION OF WORK

TREE & SHRUB MAINTENANCE
 TURF & GRASS COVER MAINTENANCE
 IRRIGATION SYSTEM MAINTENANCE
 IRRIGATION WATER
 STREET LIGHT MAINTENANCE & ENERGY
 STREET SWEEEPING
 LAKE FEATURE MAINTENANCE

REVISION MARK	REFERENCES



CITY OF ALAMEDA
CALIFORNIA
ENGINEERING DEPARTMENT

APPROVED BY
James D. Anderson
CITY ENGINEER

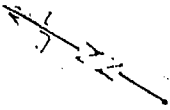
DATE: 5/23/85

SCALE: 1" = 200'

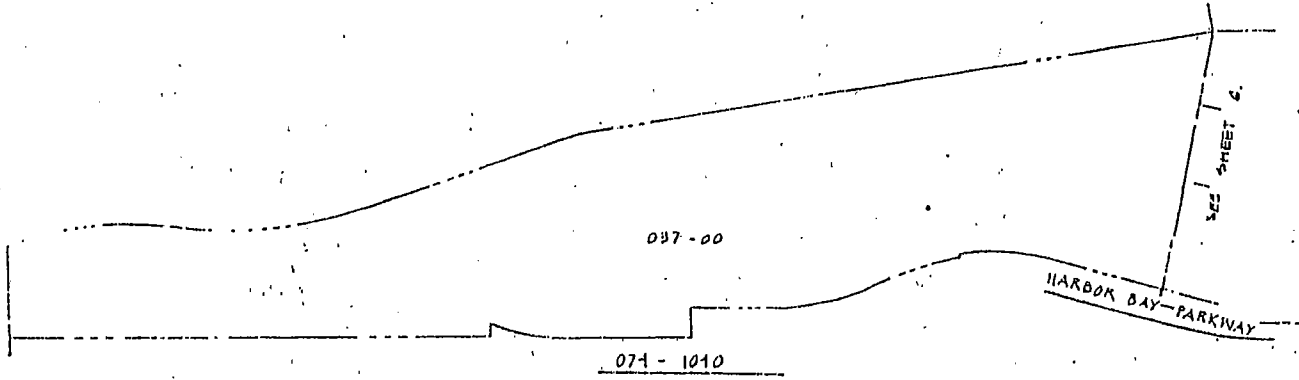
**DIAGRAM OF
ISLAND CITY LANDSCAPING
& LIGHTING DISTRICT - 2**

8894

51



ZONE FIVE



BENCH MARK	REFERENCES	DATE	BY	SCALE

CITY OF ALAMEDA
 CALIFORNIA
 ENGINEERING DEPARTMENT

DIAGRAM OF
 ISLAND CITY LANDSCAPING
 & LIGHTING DISTRICT

Prepared by
James F. Anderson
 No. *56212*
 Date *11/11/11*

8894 51